



Globex Mining Enterprises Inc.

“At Home in North America”

56,065,836 shares issued and outstanding

January 27, 2025

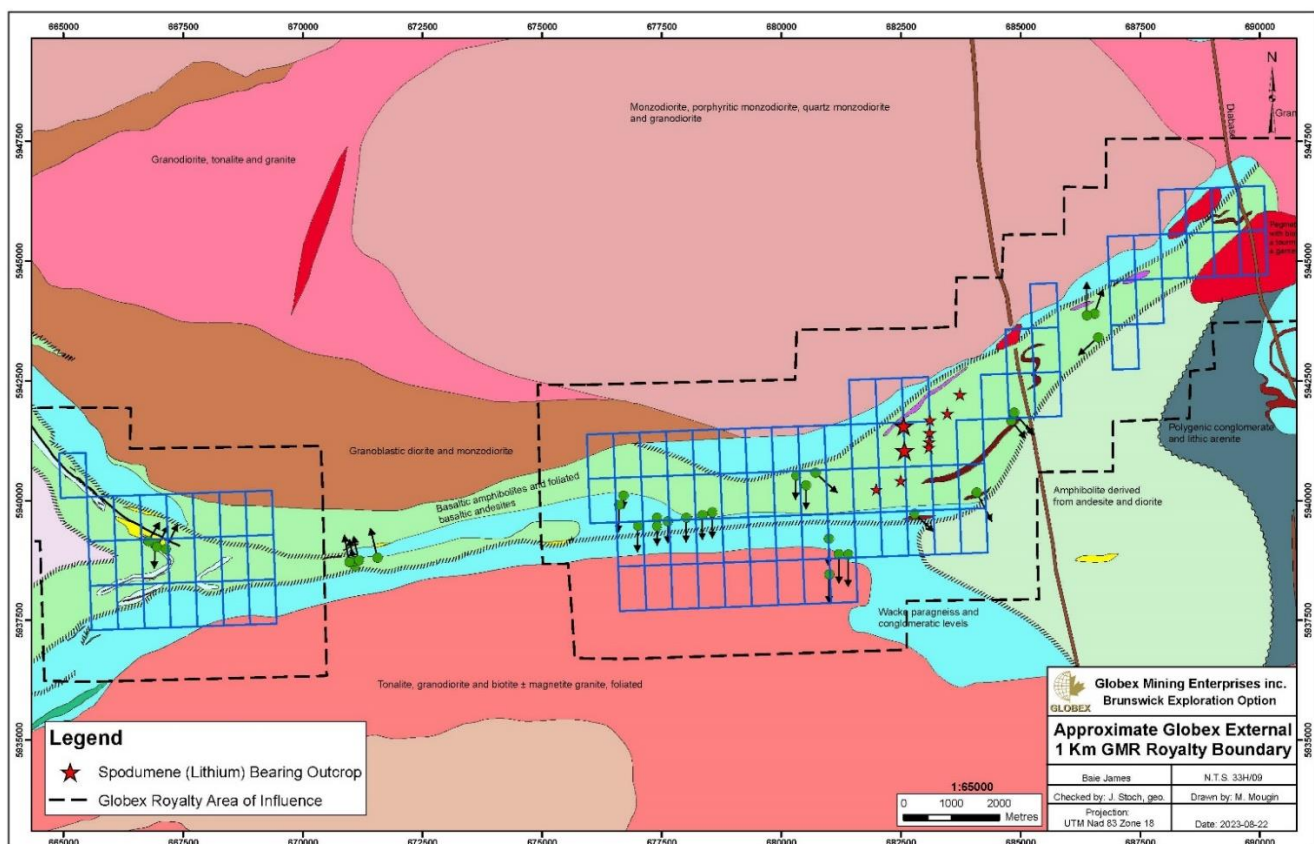
Brunswick Begins New Drilling on Globex’s Lac Escale (Mirage) Lithium Royalty Property

Rouyn-Noranda, Quebec, Canada. GLOBEX MINING ENTERPRISES INC. (GMX – Toronto Stock Exchange, G1MN – Frankfurt, Stuttgart, Berlin, Munich, Tradegate, Lang & Schwarz, LS Exchange, TTMzero, Düsseldorf and Quotrix Düsseldorf Stock Exchanges and GLBXF – OTCQX International in the US) is pleased to inform shareholders that Brunswick Exploration Inc. (BRW-TSXV, BRWXF-OTCQB, 1XQ-FRA) has started a 5,000-metre drill program on Globex’s Lac Escale (Mirage) royalty property in the Eeyou-Istchee-James Bay region of Quebec. **Globex retains a 3% Gross Metal Royalty on the Lac Escale claims and within a 1-kilometer area of influence around the claim’s external boundaries as well as a \$100,000 per year advance royalty starting at the fifth year of the agreement.**

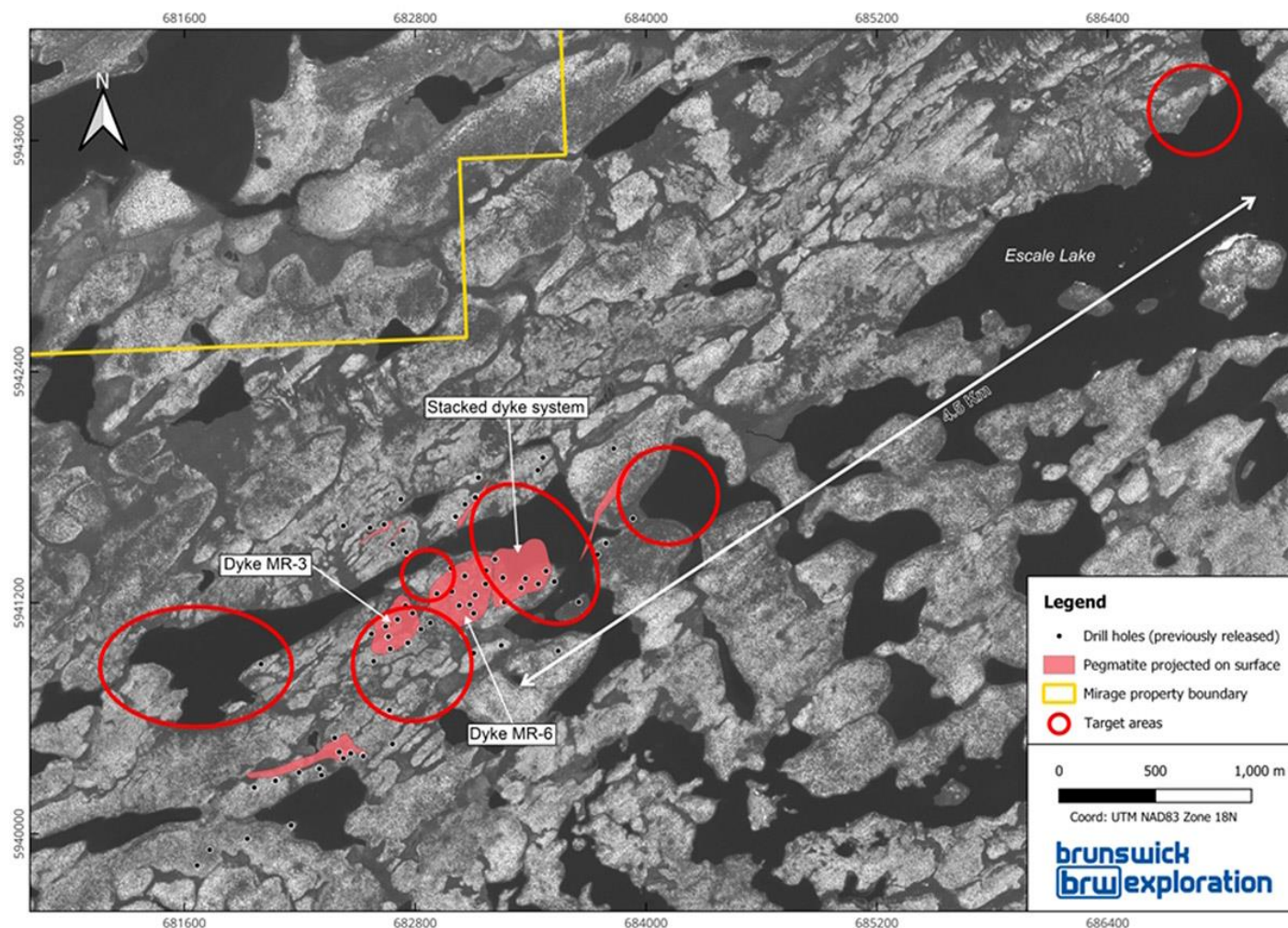
Drilling will focus on several untested targets east and west of the Central Zone corridor. In a second phase, Brunswick will target the extensions of the MR-3, MR-6 discoveries (see air photo below) and the stacked dyke system along their lateral extensions and at depth. In addition, an entirely new mineralized dyke system located 4.5 km to the northeast will be targeted.

Shareholders may gain further insight by accessing [Brunswick’s press release here](#).

Globex External 1km GMR Boundary



Lac Escale (Mirage) Target Locations – Brunswick Exploration Inc.



This press release was written by Jack Stoch, P. Geo., President and CEO of Globex in his capacity as a Qualified Person (Q.P.) under NI 43-101.

We Seek Safe Harbour.

Foreign Private Issuer 12g3 – 2(b)
CUSIP Number 379900 50 9
LEI 529900XYUKGG3LF9PY95

For further information, contact:

Jack Stoch, P. Geo., Acc. Dir.
President & CEO
Globex Mining Enterprises Inc.
86, 14th Street
Rouyn-Noranda, Quebec Canada J9X 2J1

Tel.: 819.797.5242
Fax: 819.797.1470
info@globexmining.com
www.globexmining.com

Forward-Looking Statements: Except for historical information, this news release may contain certain “forward-looking statements”. These statements may involve a number of known and unknown risks and uncertainties and other factors that may cause the actual results, level of activity and performance to be materially different from the expectations and projections of Globex Mining Enterprises Inc. (“Globex”). No assurance can be given that any events anticipated by the forward-looking information will transpire or occur, or if any of them do so, what benefits Globex will derive therefrom. A more detailed discussion of the risks is available in the “Annual Information Form” filed by Globex on SEDARplus.ca