



A Mineral Property Bank

Exploration – Diversification – Mining – Royalties

TSX: **GMX** – OTCQX: **GLBXF** – FSE: **G1MN**

May 2025

Except for historical information, this presentation may contain certain “forward-looking statements”. These statements may involve a number of known and unknown risks and uncertainties and other factors that may cause the actual results, level of activity and performance to be materially different from the expectations and projections of Globex.

No assurance can be given that any events anticipated by the forward-looking information will transpire or occur, or if any of them do so, what benefits Globex will derive from them.

A detailed discussion of the risk factors relating to Globex is available in Globex’s Annual Information Form, available at www.sedar.com and at the Corporation’s web site at www.globexmining.com.

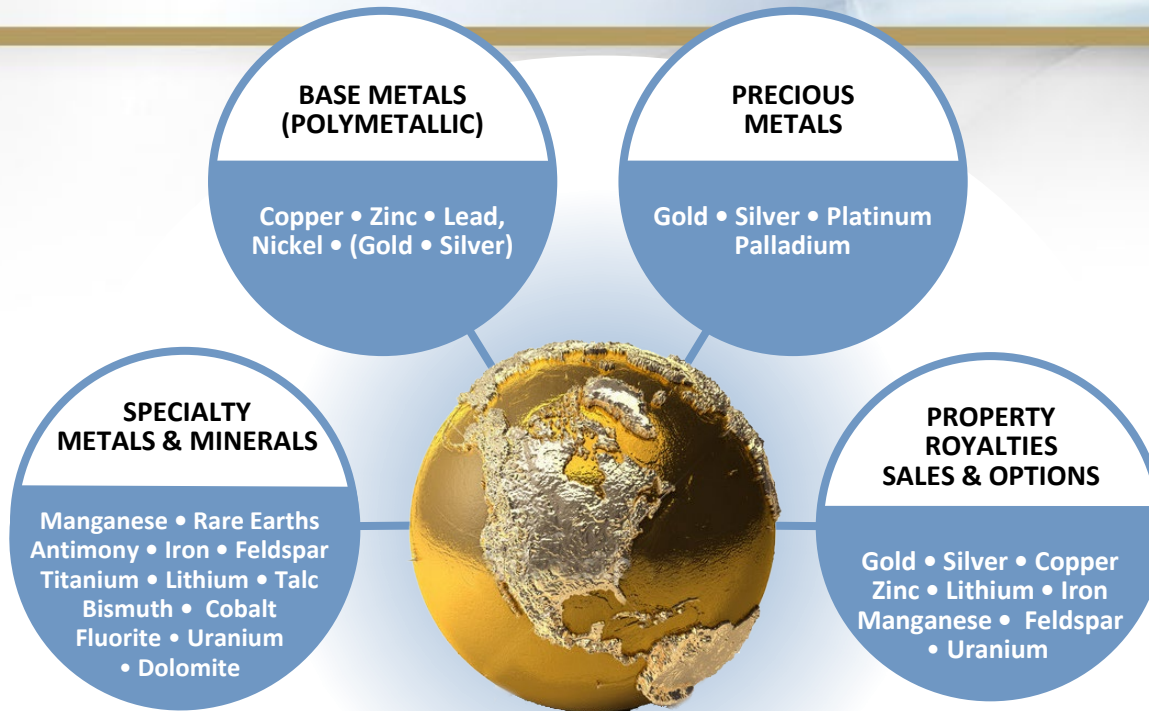
References to reserves or resources if NI 43-101 or JORC conformable will be indicated as such. If not so indicated, they are historical and have not been verified by Globex’s professional staff and should not be relied upon.

FOCUS

ON THE

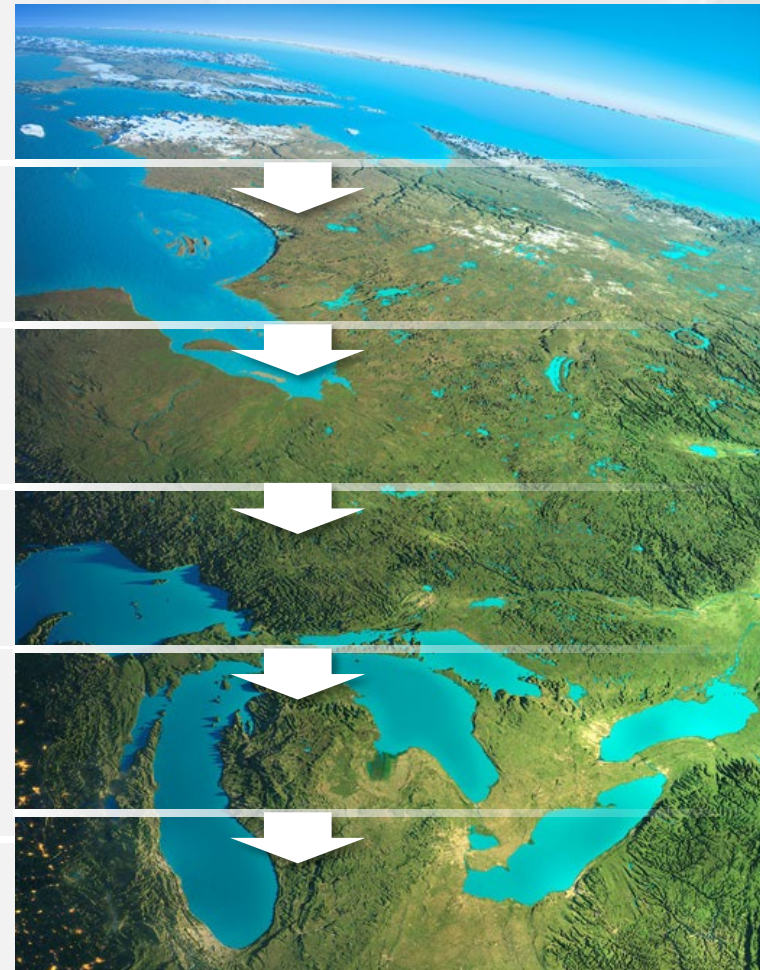
VALUE

Business Model - Diversified

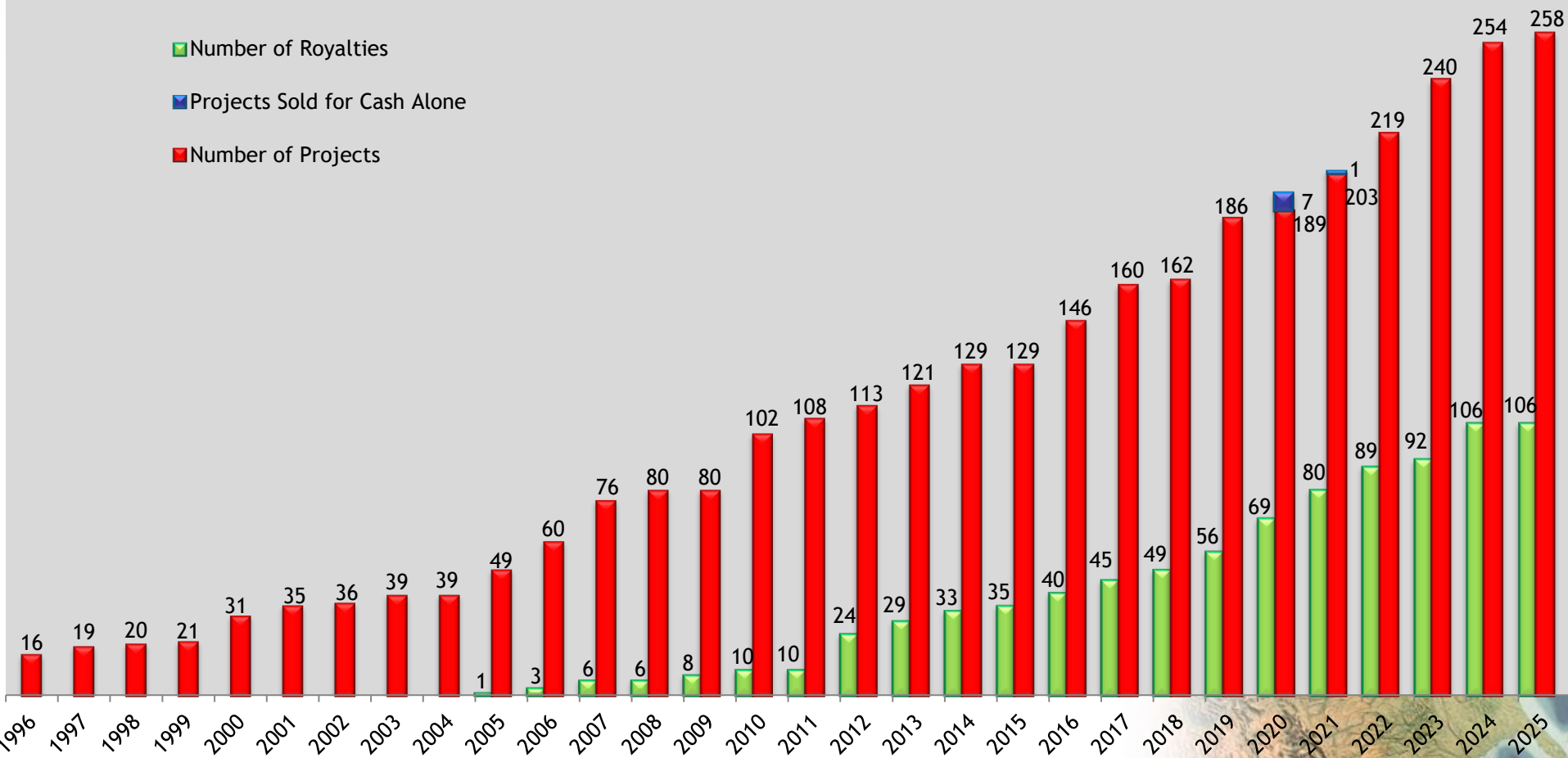


- ▶ Diversified
- ▶ Low political risk – focused in Eastern Canada, Germany and the U.S.A.
- ▶ Options, Sales, Joint Ventures and Royalties
- ▶ +\$30,000,000 cash and shares and marketable securities, no debt

- Mineral Property Bank/Incubator
- Specializing in acquisitions
- Asset upgrading through exploration and intellectual input
- Revenue through Options, Sales and Royalties
- Income = less share dilution, increased exploration expenditure, less shareholder risk, avoiding debt
- Increased property portfolio value



Total Number of Project & Royalty Acquisitions By Year





GLOBEX – THE BASICS

History of Minimal Share Dilution

- # Shares Issued (no rollbacks) 56,095,636
- Shares, Fully Diluted 58,100,636
- 12.74% owned by Management
- Professional board and management
 - 3 senior geologists, 1 mining accountant and 1 senior finance professional
- Listings

GMX (Canada) **Toronto Stock Exchange**

G1MN (Germany) **Frankfurt Stock Exchange**
 (Frankfurt, Stuttgart, Berlin, Munich, Tradegate, Lang & Schwarz, LS Exchange, TTMzero, Düsseldorf, Quotrix Düsseldorf)

GLBXF (USA) **OTCQX International**

Management and Directors

- Jack Stoch President and CEO - + 40 years of experience
P.Geo, Accredited Director
- David Christie Vice President Corporate Development- 39 years of exploration and mining finance experience. Geologist, Equity Analyst (TD and Scotia), Fund Manager, Past CEO of Eagle Hill Exploration and Orford Mining. P.Geo. (Ontario, NWT and Nunavut)
- Ian Atkinson Director - + 40 years of experience
P.Geo, M.Sc., A.K.C., D.I.C.
Retired as Director of Kinross 2024, until 2015 President Centerra Gold
Former senior positions: Hecla, Battle Mountain Gold, Hemlo Gold Mines, Noranda Group
- Johannes H.C. Van Hoff Director – International Financial Professional, Chairman NS Gold Corp.
Former senior positions – Chairman & Senior Executive Officer Soros Funds Ltd., PVF Pension Funds, Paribas Capital Markets, Bankers Trust. Roles included: Manager, Senior Risk Manager, Deputy Head of Global Equity Derivations, Managing Director, M&A Arbitrage, Derivatives Arbitrage and Capital Investments.
- Dianne Stoch Director - Accredited Director
Retired. Served +30 years as Globex CFO and Corporate Secretary.
Previously Senior Analyst, Revenue Planner - Noranda Mines for 18+ years
- Chris Bryan Director – Retired Geologist and Mining Analyst
Previously VP, Director and Portfolio Manager Bolton Tremblay
Mining Analyst /Portfolio Manager Caisse Depot Placement Quebec



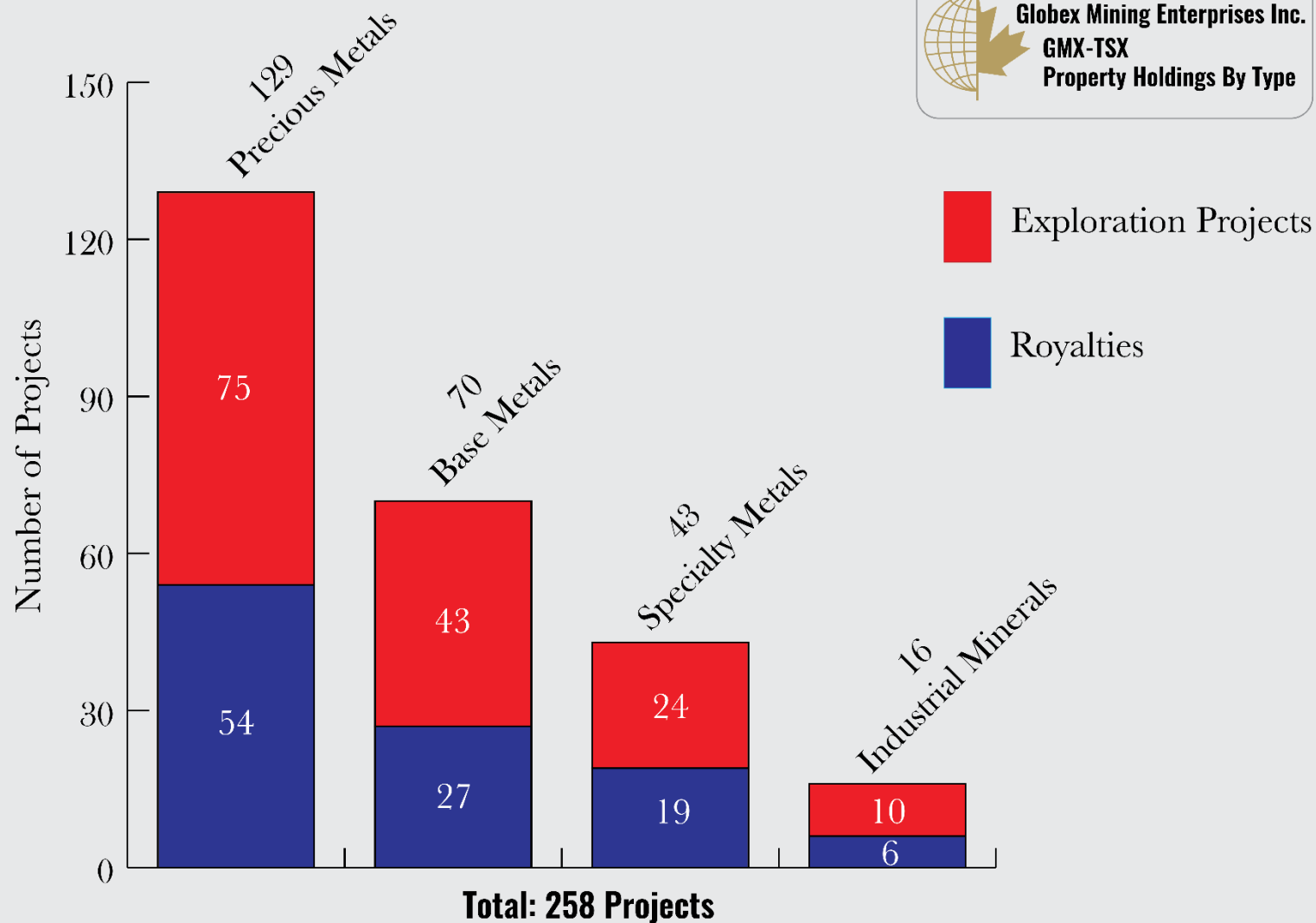
Numerous Owned Properties and Royalties

Assets include over 40
Former Mines

| | |
|-----|--|
| 258 | Projects |
| 129 | Precious Metals <ul style="list-style-type: none"> Gold, Silver, Platinum, Palladium |
| 70 | Base Metals & Polymetallic <ul style="list-style-type: none"> Copper, Zinc, Lead, Nickel (Gold, Silver) |
| 59 | Specialty Metals & Minerals <ul style="list-style-type: none"> Talc, Iron, Lithium, Beryl, Magnesium Oxide, Fluorite Manganese, Mica, Molybdenum, Rare Earths, Brucite Titanium, Silica, Bismuth, Pyrophyllite, Vanadium, Antimony, Feldspar, Cobalt, Scandium, Diamond, Uranium, Dolomite, Sodium Sulphate, Tantalum |
| 106 | Royalties |
| 6 | Active options <ul style="list-style-type: none"> Cash payments Share payments Exploration & Development expenditures Gross Metal Royalty |
| 59 | Historical or NI 43-101 Resources |

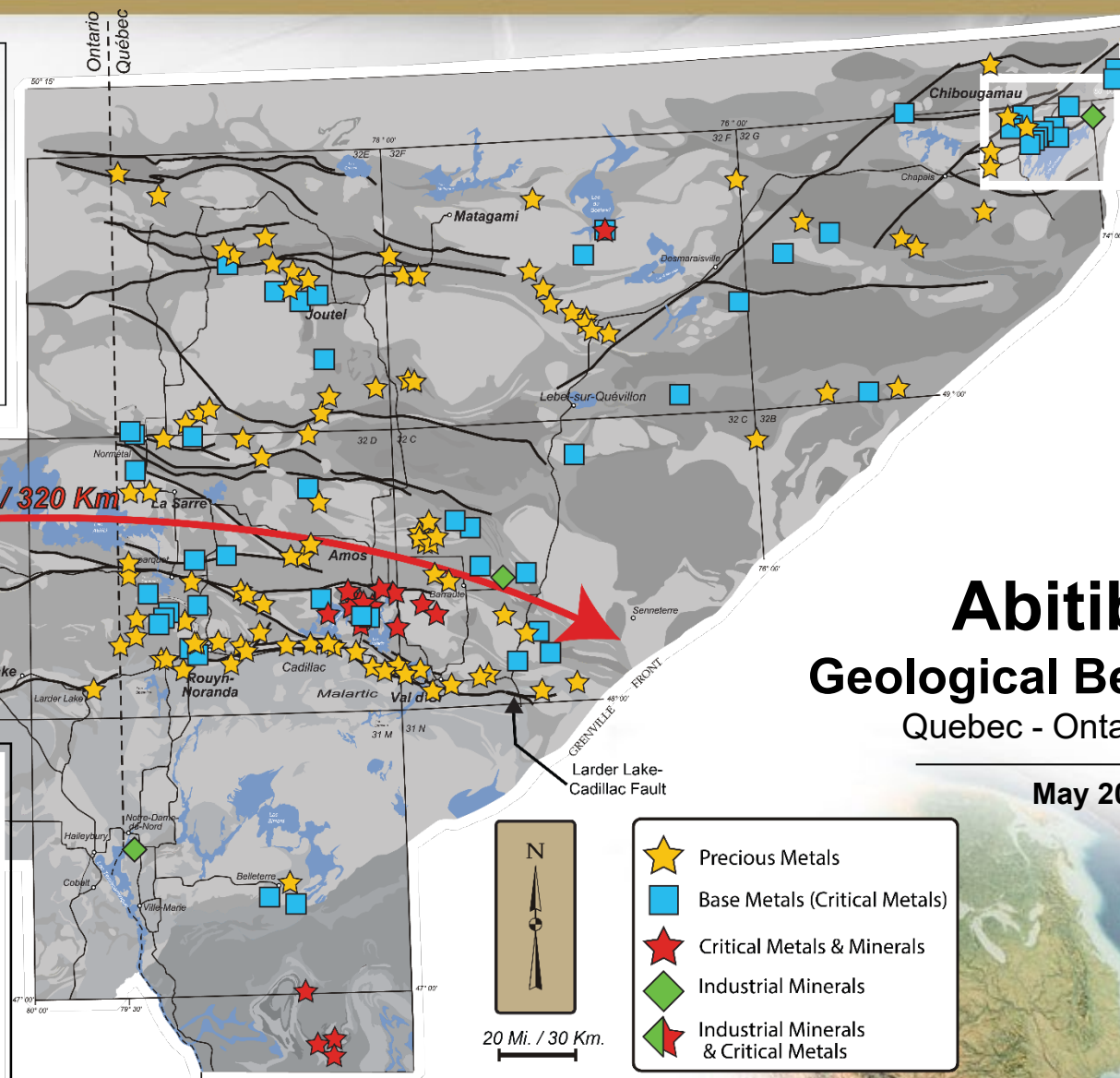
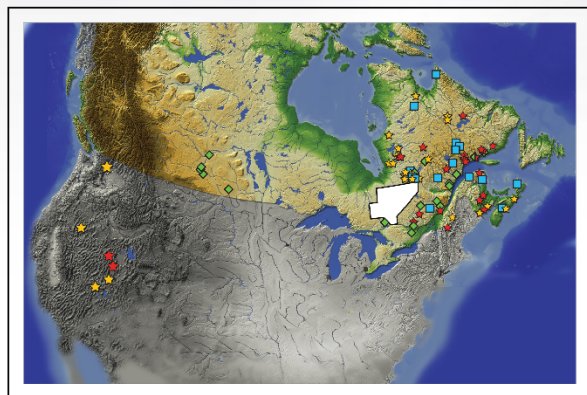
Note: Some properties have been combined due to proximity or infill staking

Property Holdings By Type



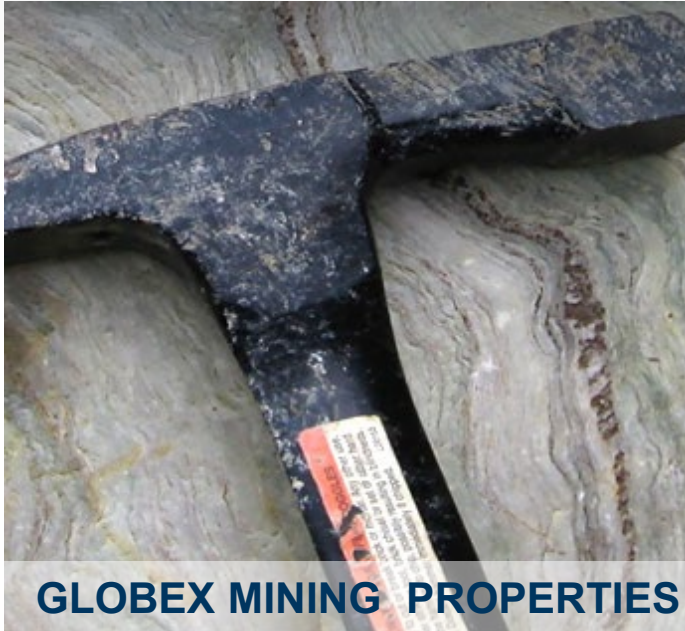
May, 2025

Diversified Mineral Holdings



Abitibi Geological Belt Quebec - Ontario

May 2025



All GLOBEX properties possess one or more key attributes:

- Historical or NI 43-101 Resource
- Drill intersections of Economic Interest
- Past production
- Mineralized showings or drill targets
 - geophysical, geochemical, geological
- Location on major ore localizing structures or in prolific mining camps
 - ex. Cadillac Break, Porcupine-Destor Break, Noranda, Val d'Or, Joutel, Malartic, Chibougamau and Timmins Mining Camps, etc.

- Acquiring diversified high potential assets



Francoeur - Arntfield Mines

Francoeur/Arntfield/Lac
Fortune Gold Mines



MONTALEMBERT

Very high grade GOLD values at
surface in Waswanipi area



ELDRICH GOLD MINE

Potential to depth and on strike



ENERGY PROJECTS

Uranium in Quebec



Virgin Mountain

Rare Earth properties in
Arizona and Quebec



DEVIL'S PIKE

Inferred + 90,000 oz Au
New Brunswick



+14Km of Porcupine-Destor Break

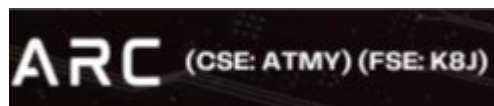
Premier Gold Horizon



SCANDIUM

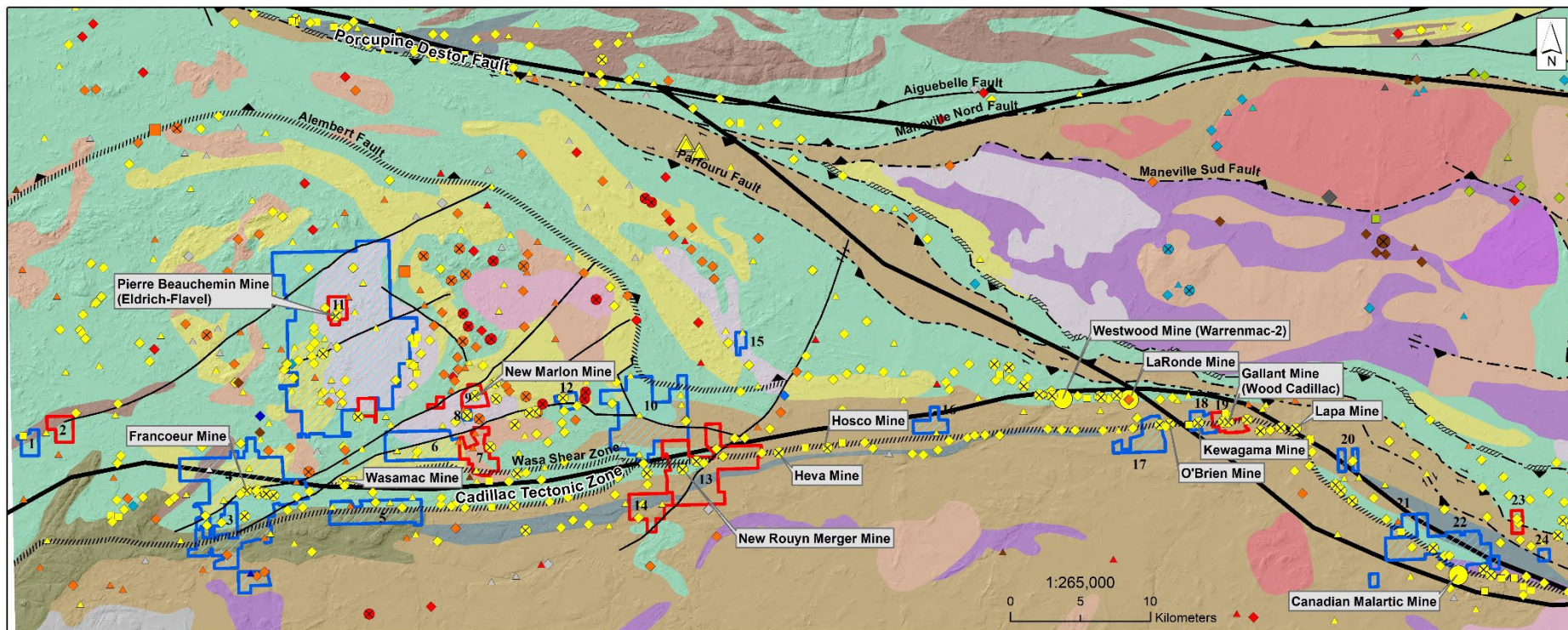
Scandium/Rare Earth
Property in Quebec

Some of the 111 Royalty and/or Option Agreement Partners



Exceptional Exposure to the Cadillac Break

The Larder Lake – Cadillac Break – one of the most prolific Gold Structures in the World



Legend

Pontiac Subprovince

- Wacke, mudrock and shale
- Wacke, mudrock and conglomerate
- Ultramafic volcanic rock and serpentinite
- Tonalitic gneiss
- Conglomerate, wacke and sandstone
- Basalt and amphibolite
- Monzodiorite and monzonite

Abitibi Subprovince

- Basalt, andesite, intermediate tuff and gabbro
- Sandstone and turbidite mudrock
- Komatite and basalt
- Rhyolite, dacite and felsic tuff
- Trondhjemitic, tonalite and diorite
- Granodiorite
- Quartz diorite
- Monzogranite and monzonite, aplite and granitic pegmatic
- Gabbroic sill, basalt and volcanoclastic rock

Globex Properties (100%)

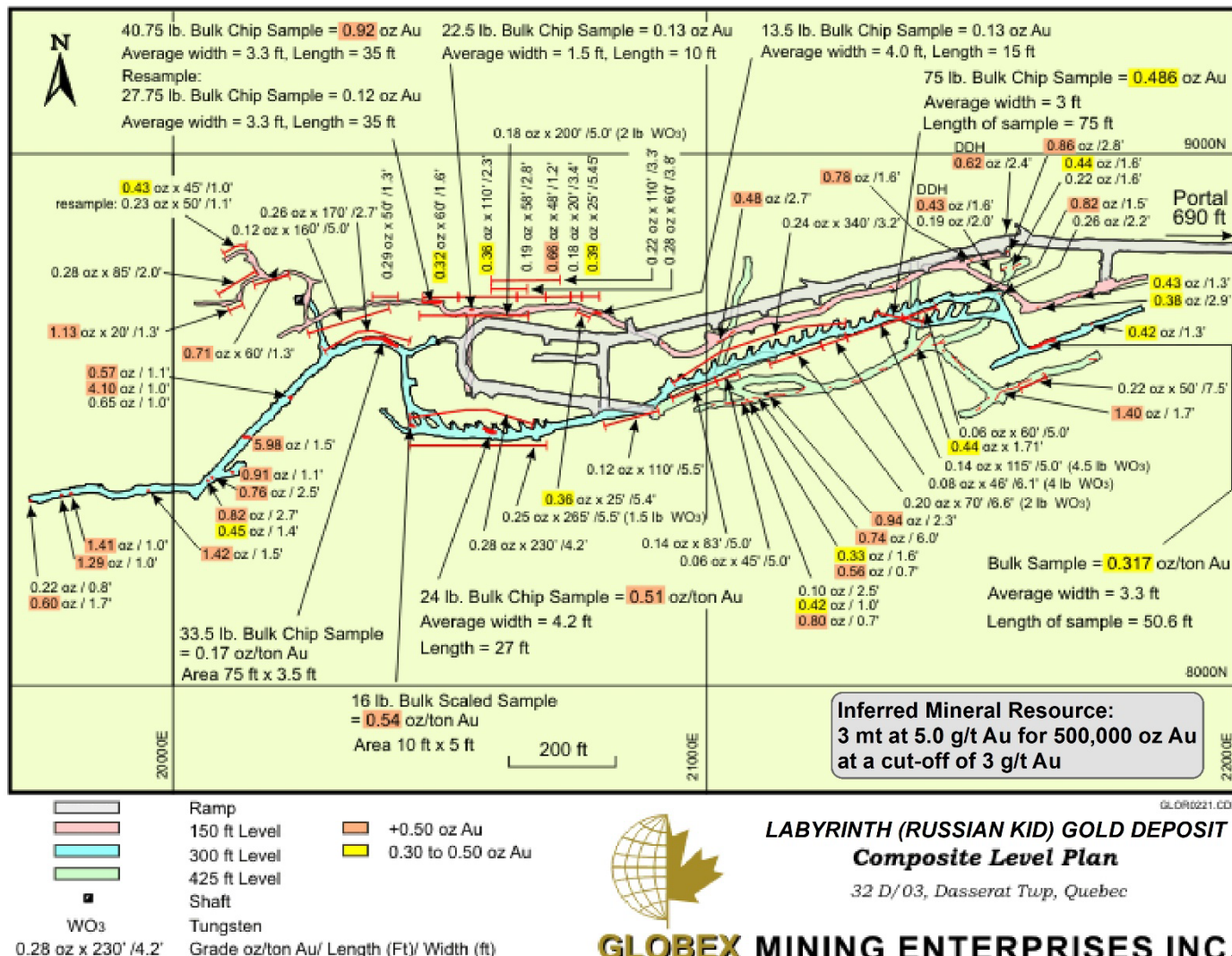
Globex Properties (Royalty)

- 1: Russian Kid (Labyrinth) (5% to 3% NMR)
- 2: Dasserat
- 3: Lac Fortune West (1.5% NSR)
- 4: Francoeur, Arntfield, Lac l'Fortune (2% GMR)
- 5: Beauchastel Cadillac Fault (3% GMR)
- 6: Wasamac East (2% GMR)
- 7: Beauchastel Rouyn
- 8: Silidor Aggrégat (0.25 %metric tonnes after 300 000 tonnes extracted rock)
- 9: Silidor New Marlon
- 10: Vezina (Globex) Royalty (2% NSR)
- 11: Eldrich (100%)
- 12: Donalda (2.5% GMR)
- 13: Rouyn Merger
- 14: Adanac
- 15: Cléricky (1% GMR)
- 16: Bousquet (1/2% GMR)
- 17: New Alger (1% NSR)
- 18: Kewagama (2% NSR)
- 19: Wood Cadillac
- 20: Deane Cadillac (2% GMR)
- 21: Parbec (3% GMR)
- 22: East Amphi (2% NSR)
- 23: Blackcliff JV (50% Globex)
- 24: Osisko East (2% GMR)

Labyrinth (Russian Kid) Gold Property, QC

Royalty – 5% GMR on first 25,000 oz Au, 3% GMR thereafter

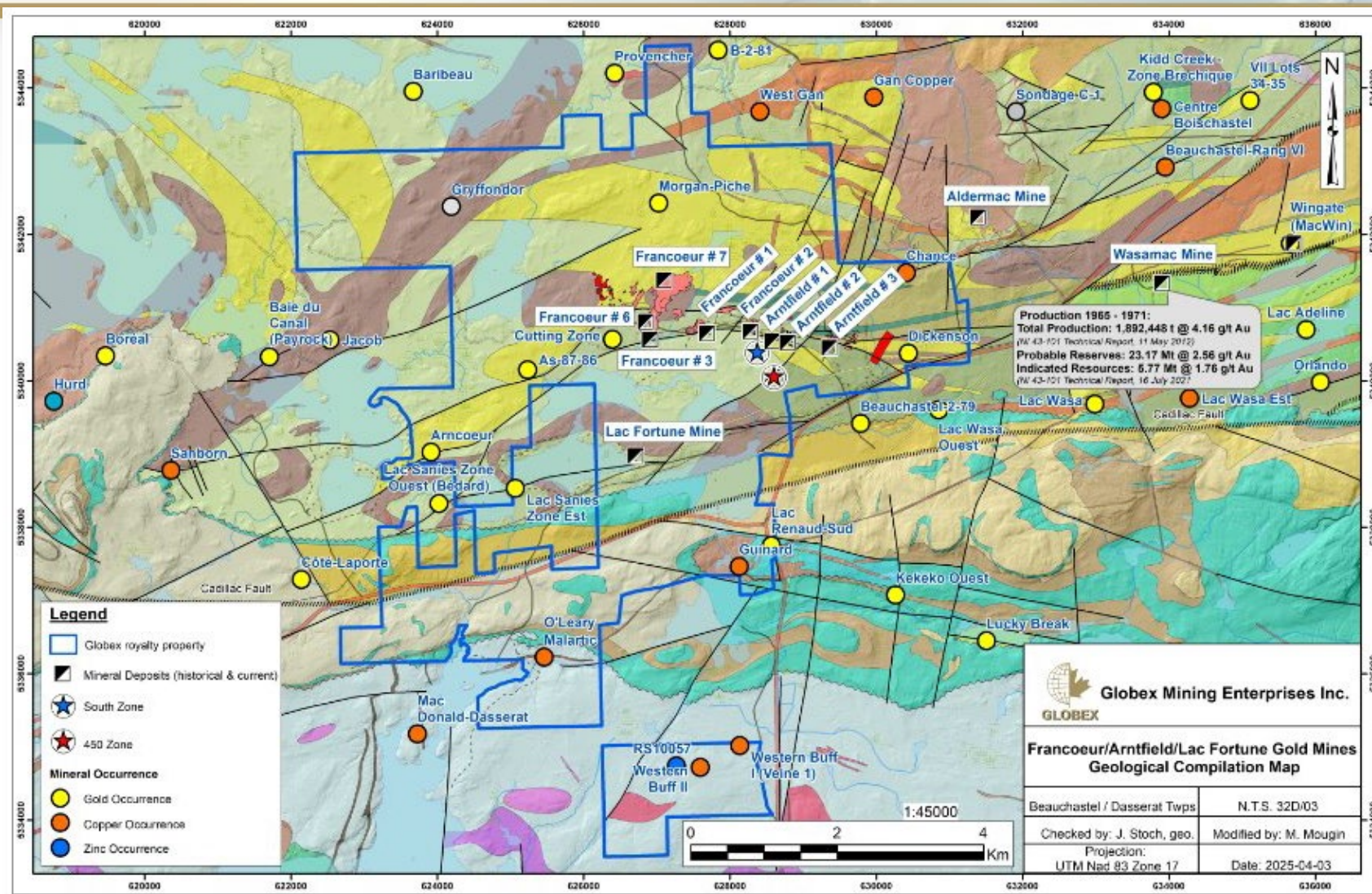
Operator is Gorilla Gold : Deposit is open in all directions



* Ref: Technical Report Resource update, Rocmec 1 Mineral Deposit, Abitibi West Quebec, Canada for Rocmec Mining Inc. written by SGS Canada - May 21, 2010

Agnico Eagle Wasamac Property West Half Royalty

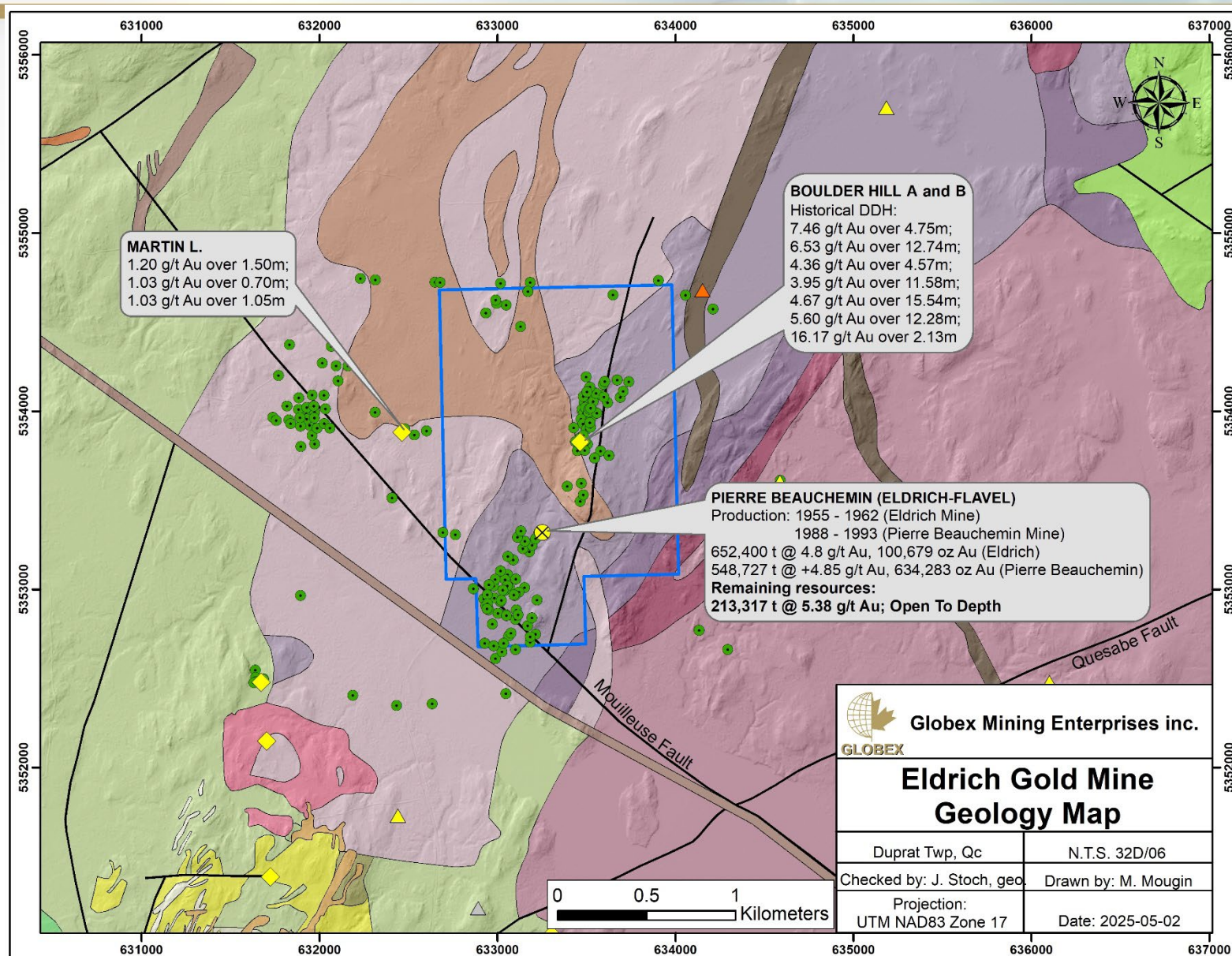
Globex Francoeur Royalty – 2% GMR, Price \$15,000,000/5 yrs



At December 31, 2024 Agnico Eagle reserves and resources on Wasamac to the east of Francoeur/Arntfield: Probable mineral reserves of **1.4 million oz. of gold** Measured and Indicated mineral resources of **670,000 oz. of gold** and Inferred mineral resources of **300,000 oz. of gold**

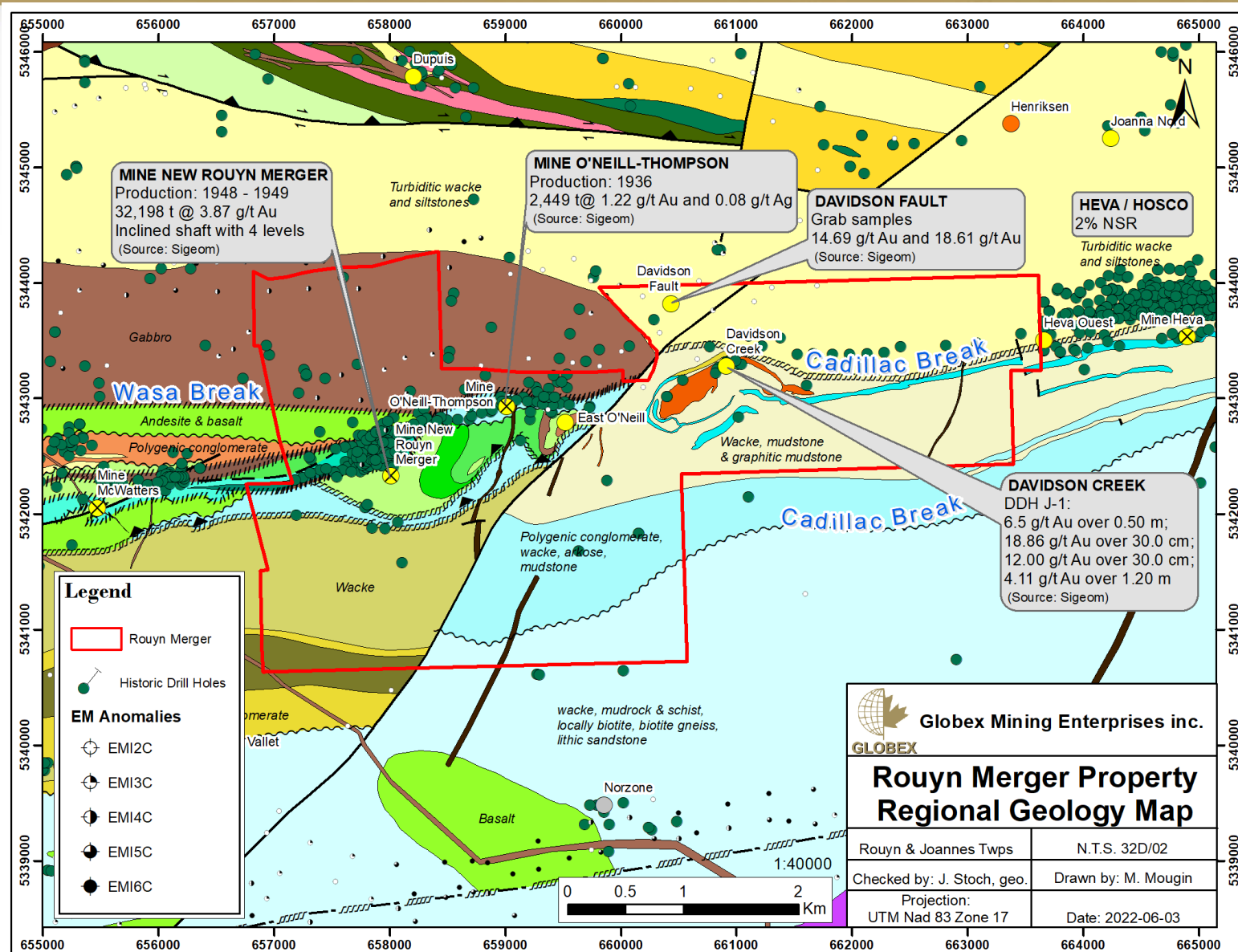
Eldrich Gold Mine Property, Quebec

100% Globex – Historic Producer



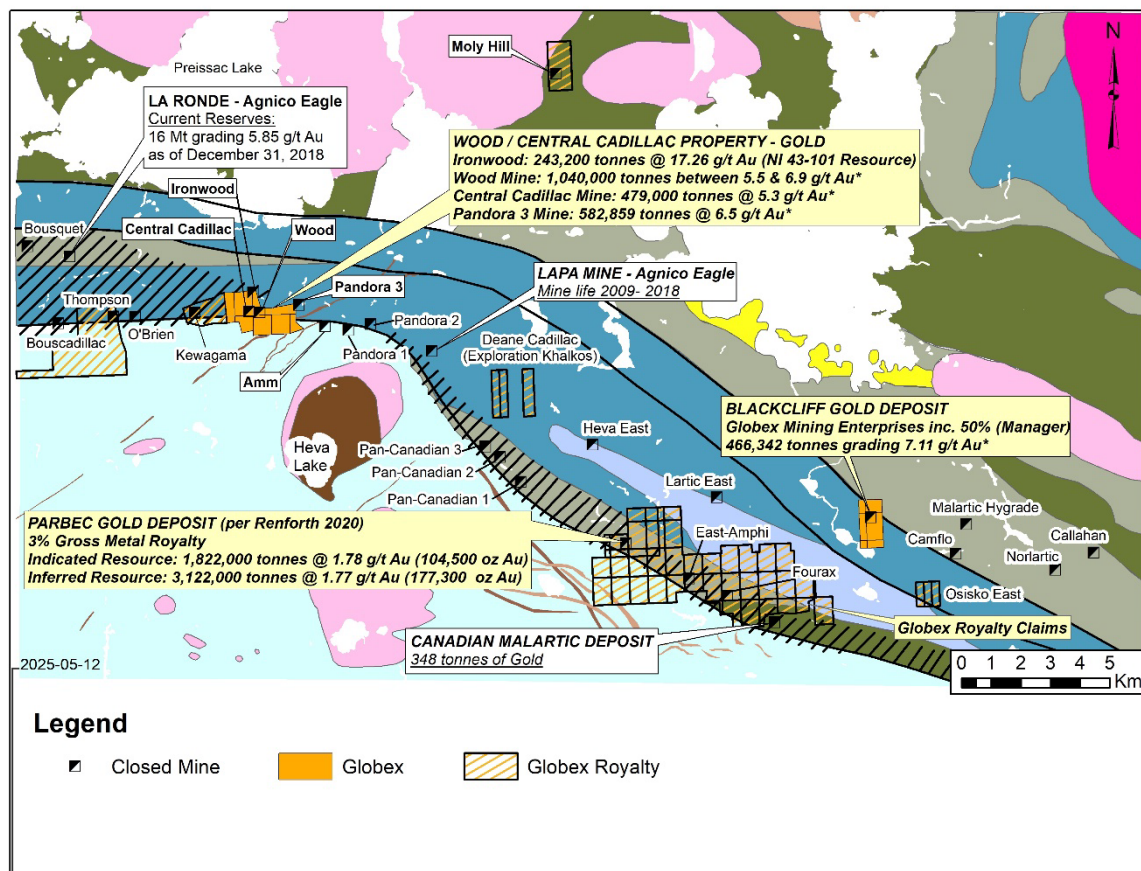
Rouyn Merger Gold Property – 100% Globex

Drilling Expected this Spring



Wood /Central Cadillac Property

100% Globex – Updated Resource in Progress



Ironwood

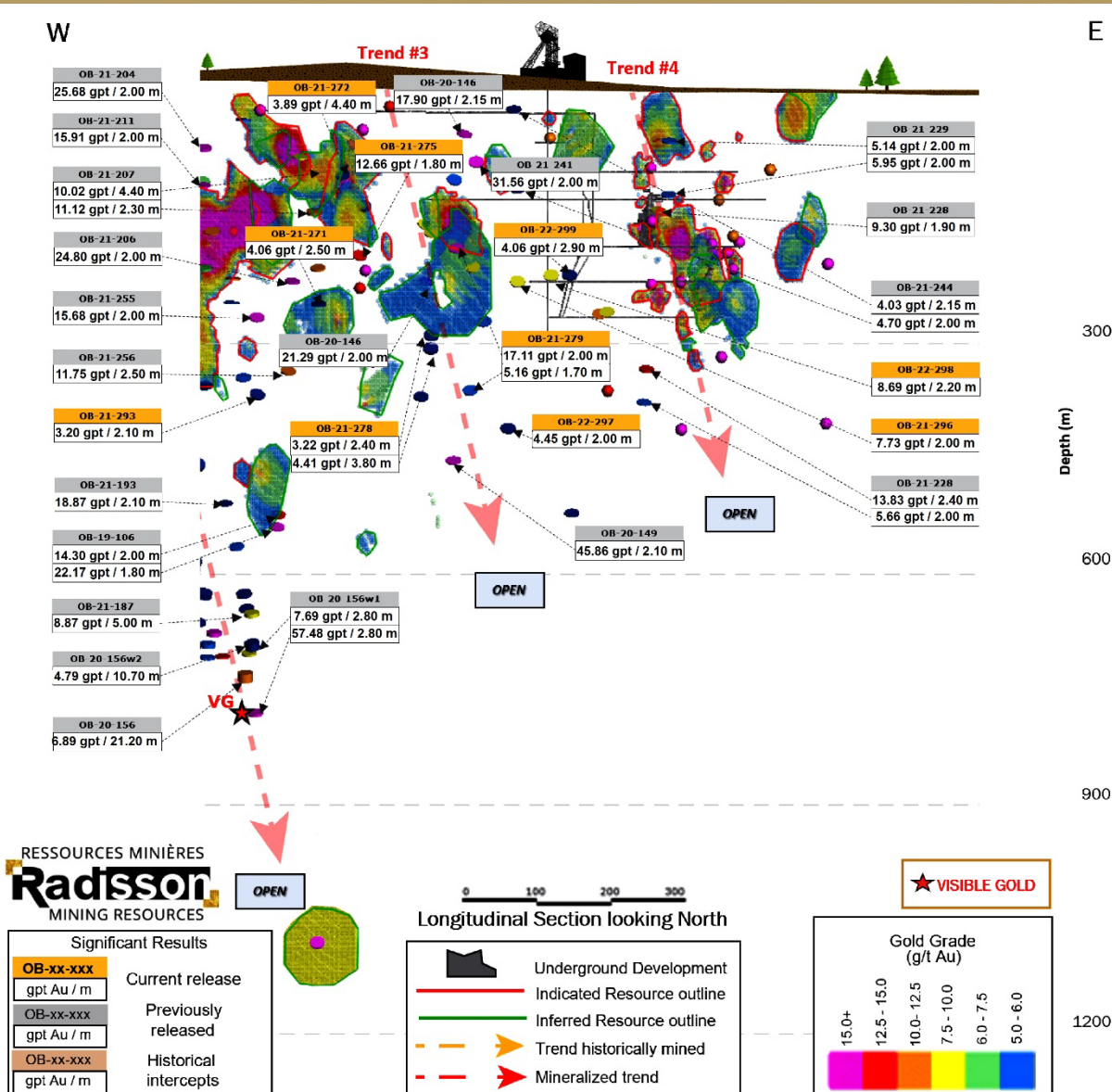
- Updated Resource in progress
- 19 New Drill holes completed in 2024
- Confirmed size and shape of mineralized body
- **243,200 tonnes at 17.26 g/t Au** Inferred resource NI 43-101 (2006)

Ironwood 2024 drill hole highlights

- SIW 24-01, which returned **21.78 g/t Au over 2.62 m** true width at a depth of 142 m vertical
- SIW 24-03 which returned **16.63 g/t Au over 11.08 m** true width at a depth of 165 m vertical
- SIW-24-05 which returned **5.69 g/t Au over 6.65 m** true width at a depth of 224 m vertical
- SIW-24-06 which returned **21.70 g/t over 5.85 m** true width at a depth of 246 m vertical
- NIW-24-05 which returned **8.10 g/t over 3.58 m** true width at a depth of 46 m vertical
- NIW-24-06 which returned **7.74 g/t over 1.34 m** true width at a depth of 27 m vertical
- NIW-24-08 which returned **21.39 g/t over 1.58** true width at a depth of 114 m vertical
- NIW-24-09 which returned **16.75 g/t over 1.54 m** true width at a depth of 73.2 m vertical
- NIW-24-11 which returned **7.00 g/t over 4.94 m** true width at a depth of 164 m vertical

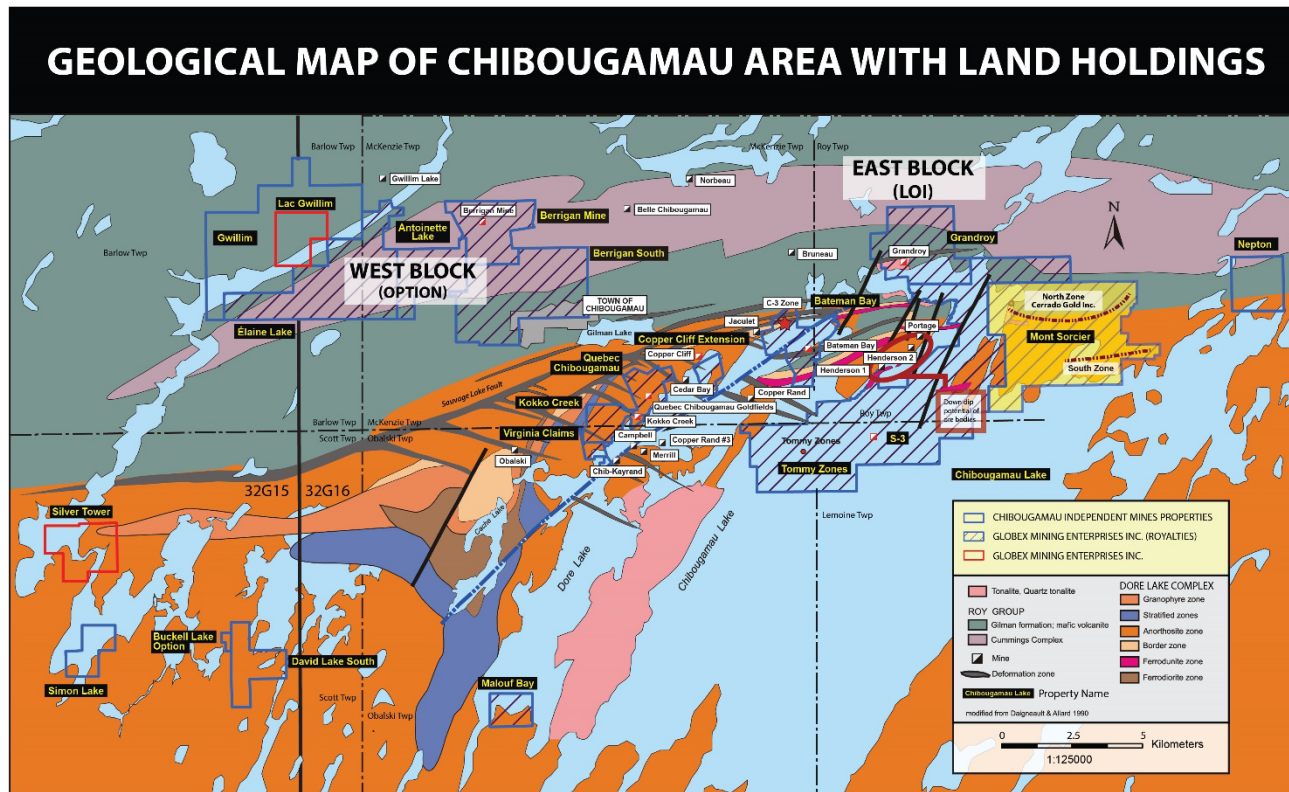
Kewagama-Radisson Mining Royalty, Quebec

Royalty – 2% NSR: Open to Depth and along Strike



Radisson's O'Brien Project March 2, 2023 O'Brien 43-101 Resource (Radisson website)

- Indicated: **1.517 m tonnes** grading **10.26 g/t** for **501,000 ounces**
- Inferred: **1.601 million tonnes** grading **8.66 g/t** for **446,000 ounces**
- 22,000 metre drill program in 2025, metallurgical work and contemplating a PEA.



CHIBOUGAMAU INDEPENDENT MINES INC. & GLOBEX MINING ENTERPRISES INC.

Lemoine, Obalski, McKenzie & Roy Townships, Quebec (32 G/16)

- 5 former copper-gold mines
- 3 extensions of copper-gold mines
- 2 unmined deposits (1 Cu/Zn and 1 Au/Zn/Ag)
- Mont Sorcier + 1 billion tonnes, iron/ vanadium deposits
- Numerous drill-ready targets
- **Globex Royalty 2% GMR (other than Mont Sorcier)**

Historical Production

**47.6 Million Tons
Copper & Gold**

Significant Gold Intersections Within Previous Drilling Surface diamond drill holes Berrigan Property 32G16

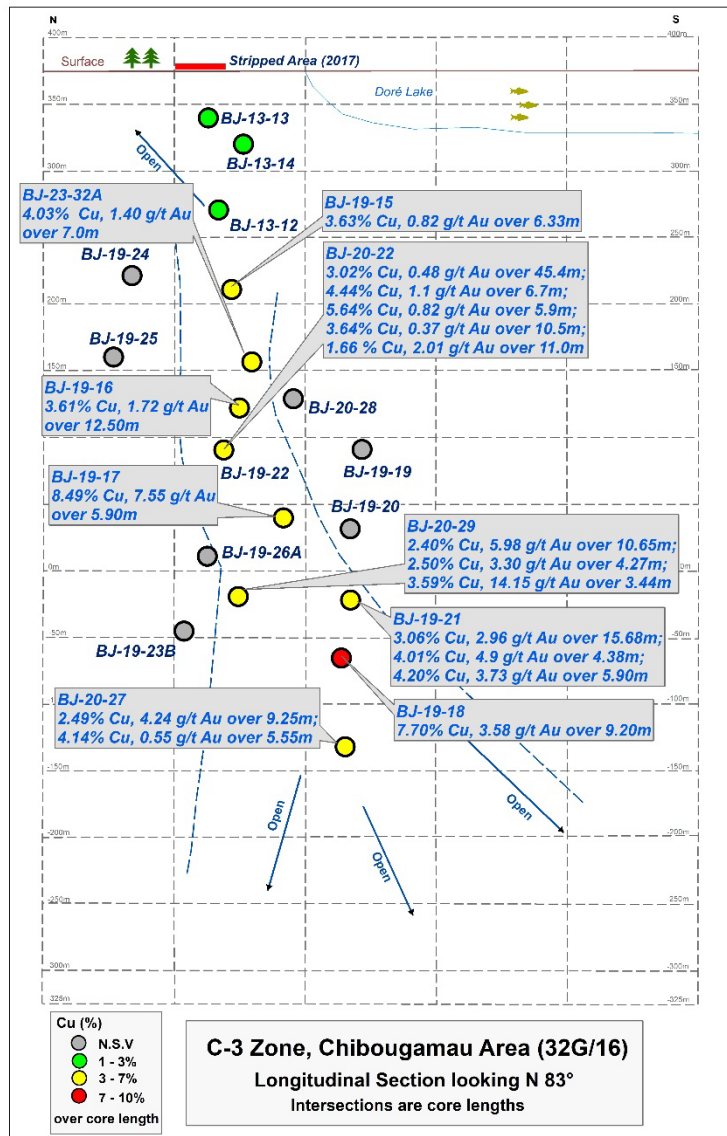
| Hole # | From | To | Interval | % Zn | % Cu | Au g/t | Ag g/t |
|--------|---------|---------|----------|--------|-------|-----------|------------|
| A-005 | 131.4 m | 140.2 m | 8.8 m | 5.70% | | 6.96 g/t | |
| A-010 | 97.3 m | 105.2 m | 7.9 m | 4.43% | | 4.94 g/t | 25.36 g/t |
| A-016 | 18.9 m | 21.2 m | 2.3 m | 1.51% | | 6.43 g/t | |
| | 76.2 m | 77.7 m | 1.5 m | 3.45% | | 8.91 g/t | |
| A-061 | 91.6 m | 100.6 m | 9.0 m | 3.76% | 0.16% | 3.00 g/t | 17.24 g/t |
| | 107.1 m | 115.7 m | 8.6 m | 6.15% | 0.17% | 8.14 g/t | 39.70 g/t |
| A-062 | 59.3 m | 61.1 m | 1.8 m | 6.92% | | 4.62 g/t | 17.14 g/t |
| A-063 | 113.7 m | 114.3 m | 0.6 m | 17.55% | | 49.23 g/t | 404.64 g/t |
| | 129.4 m | 132.8 m | 3.4 m | 8.86% | | 8.88 g/t | 68.16 g/t |
| | 138.9 m | 141.5 m | 2.6 m | 4.69% | | 4.04 g/t | 11.14 g/t |
| A-065 | 121.6 m | 125.7 m | 4.6 m | 7.67% | | 6.08 g/t | 21.56 g/t |
| | 139.8 m | 144.5 m | 4.7 m | 2.80% | | 3.55 g/t | 7.64 g/t |
| | 164.7 m | 167.2 m | 2.5 m | 3.13% | | 6.95 g/t | 15.44 g/t |
| A-066 | 100.6 m | 101.8 m | 1.2 m | 22.90% | | 36.65 g/t | 39.73 g/t |
| | 159.8 m | 168.8 m | 9.0 m | 6.26% | | 5.19 g/t | 19.60 g/t |
| A-070 | 157.1 m | 158.2 m | 1.1 m | 16.75% | | 10.96 g/t | |
| A-072 | 188.7 m | 190.9 m | 2.2 m | 5.08% | | 3.13 g/t | |
| A-073 | 144.8 m | 145.1 m | 0.3 m | 27.90% | | 32.88 g/t | |
| A-076 | 126.3 m | 129.8 m | 3.5 m | 11.07% | | 3.02 g/t | |
| A-083 | 94.3 m | 96.3 m | 2.0 m | 4.45% | | 3.79 g/t | 10.34 g/t |
| | 119.4 m | 132.6 m | 13.2 m | 4.99% | | 2.88 g/t | 15.91 g/t |
| A-084 | 130.3 m | 142.8 m | 12.5 m | 4.58% | | 5.10 g/t | 17.18 g/t |
| A-086 | 50.9 m | 52.1 m | 1.2 m | 7.00% | | 15.07 g/t | 59.60 g/t |
| A-103 | 56.4 m | 59.4 m | 3.0 m | 5.84% | | 11.61 g/t | |

| Hole # | From | To | Interval | % Zn | % Cu | Au g/t | Ag g/t |
|----------|---------|---------|----------|--------|-------|-----------|-----------|
| U-02 | 44.9 m | 45.6 m | 0.7 m | 2.95% | | 17.81 g/t | 89.74 g/t |
| | 90.4 m | 91.4 m | 1.0 m | 13.80% | | 26.72 g/t | 58.91 g/t |
| U-03 | 95.8 m | 108.7 m | 12.9 m | 5.75% | | 3.11 g/t | 15.17 g/t |
| | 8.2 m | 16.6 m | 8.4 m | 13.09% | | 6.98 g/t | 20.71 g/t |
| | 49.4 m | 64.0 m | 14.4 m | 8.69% | | 3.41 g/t | 17.49 g/t |
| U-04 | 17.4 m | 19.7 m | 2.3 m | 12.77% | | 4.60 g/t | 14.65 g/t |
| | 85.9 m | 86.6 m | 0.7 m | 7.05% | | 37.68 g/t | 78.09 g/t |
| U-09 | 71.8 m | 75.8 m | 4.0 m | 2.32% | | 4.32 g/t | 12.43 g/t |
| SU-23 | 2.8 m | 10.6 m | 7.8 m | 3.98% | | 3.33 g/t | 20.54 g/t |
| SU-52 | 0.0 m | 5.0 m | 5.0 m | 3.88% | | 3.01 g/t | 19.82 g/t |
| SU-59 | 0.0 m | 4.1 m | 4.1 m | 5.40% | | 3.51 g/t | 31.04 g/t |
| TA-87-27 | 31.1 m | 32.3 m | 1.2 m | 5.60% | | 17.98 g/t | 37.33 g/t |
| TA-87-40 | 81.1 m | 83.5 m | 2.4 m | 10.05% | | 2.96 g/t | 50.05 g/t |
| | 91.4 m | 94.2 m | 2.8 m | 10.82% | | 3.23 g/t | 19.19 g/t |
| TA-90-50 | 65.5 m | 70.1 m | 4.6 m | 4.12% | | 6.78 g/t | 10.12 g/t |
| | 84.6 m | 87.5 m | 2.9 m | 3.90% | | 3.20 g/t | |
| | 95.5 m | 106.7 m | 11.2 m | 10.39% | 0.10% | 2.54 g/t | 19.26 g/t |
| TA-90-51 | 114.0 m | 129.5 m | 15.5 m | 6.57% | 0.10% | 8.05 g/t | 23.58 g/t |
| | 197.4 m | 200.0 m | 2.6 m | 5.39% | 0.21% | 3.52 g/t | 20.10 g/t |
| TA-90-52 | 201.2 m | 203.3 m | 2.1 m | 5.21% | | 5.70 g/t | 11.60 g/t |
| TA-90-56 | 81.0 m | 84.4 m | 3.4 m | 5.75% | | 4.06 g/t | |
| | 164.4 m | 166.9 m | 2.5 m | 5.23% | | 6.18 g/t | |
| | 215.7 m | 219.6 m | 3.9 m | 6.74% | | 3.95 g/t | |
| TLT-09 | 247.4 m | 249.7 m | 2.3 m | | | 4.28 g/t | |

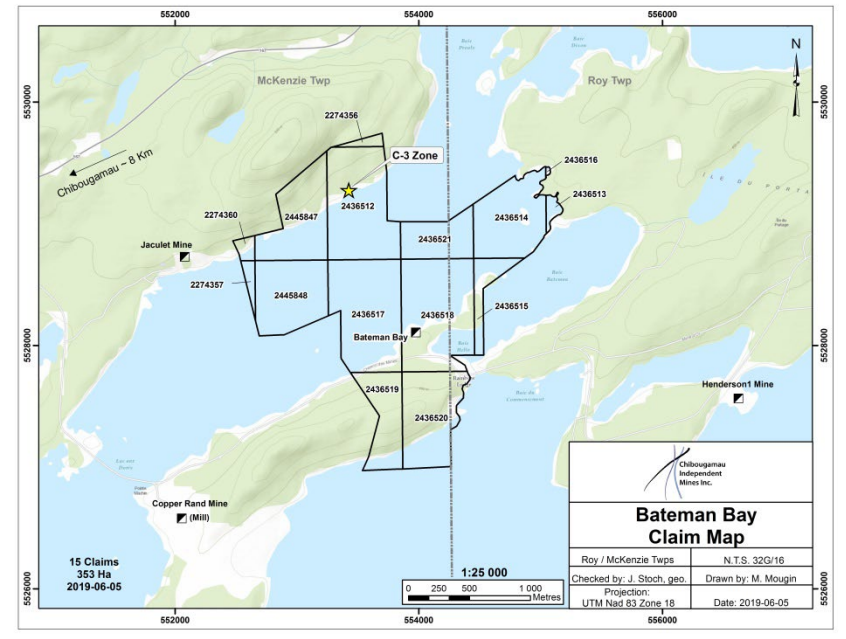
Globex: 2% Gross Metal Royalty

C-3 Copper/Gold Zone (Bateman Bay)

2% GMR: McKenzie & Roy Townships, Quebec (NTS 32G/16)

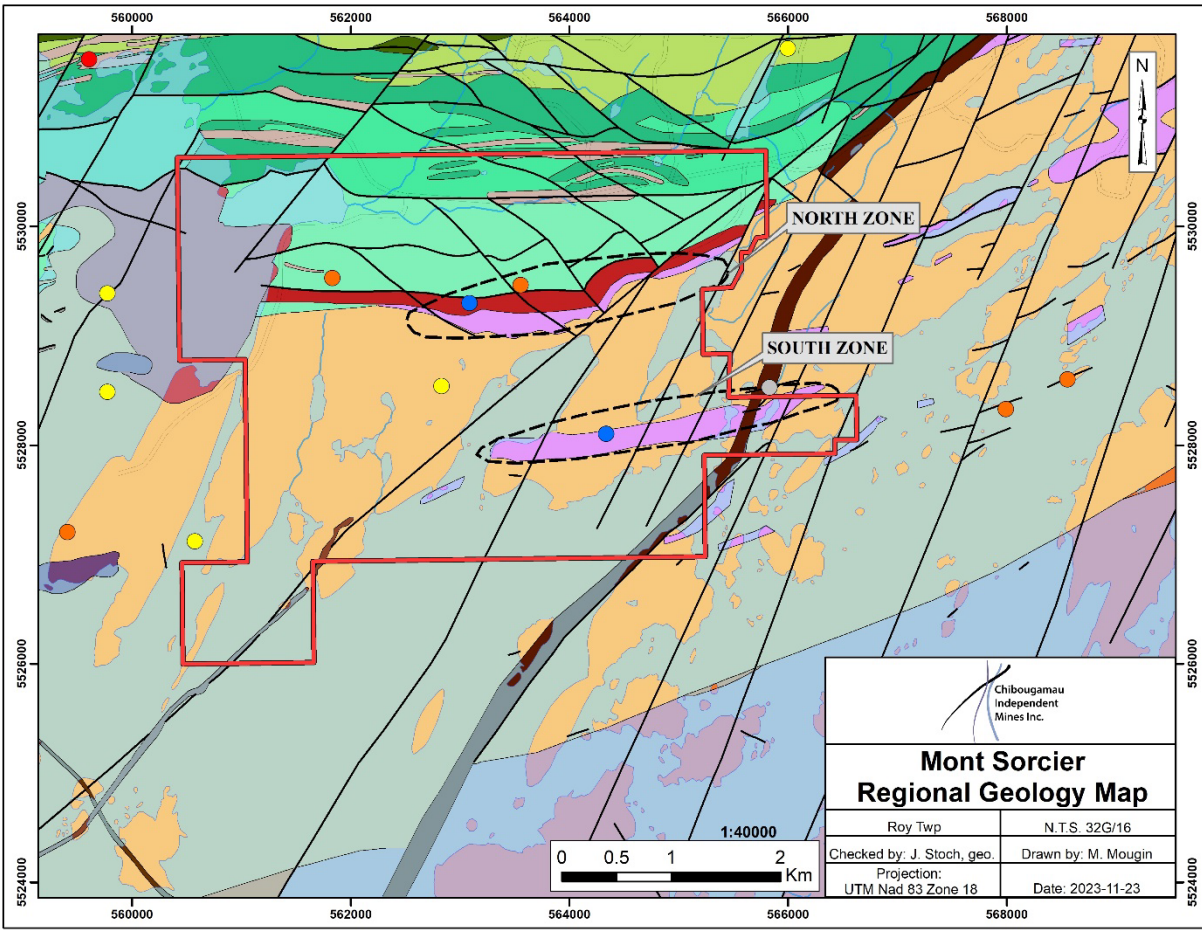


- Chibougamau Mining District
- Intercepted from surface to 450m (±1,500 ft) vertical
- High grade copper and gold (some silver and cobalt)
- Open to depth and along strike (both directions)
- Easily accessible by road and near the Town of Chibougamau
- Globex: 3% Gross Metal Royalty



Mont Sorcier – Feasibility Study in progress

Royalty - 1% GMR, NI 43-101 Resource



- North Zone:**
 - Indicated Resource: 559.3 Mt grading 72.05% Fe and 0.21% V₂O₃
 - Inferred Resource: 470.5 Mt grading 72.99% Fe and 0.18% V₂O₃
 - South Zone:**
 - Indicated Resource: 119.2 Mt grading 82.04% Fe and 0.17% V₂O₃
 - Inferred Resource: 76.2 Mt grading 81.38% Fe and 0.13% V₂O₃
 - Total:**
 - Indicated Resource: 678.5 Mt grading 73.52% Fe and 0.20% V₂O₃
 - Inferred Resource: 546.6 Mt grading 73.96% Fe and 0.17% V₂O₃
- + 1,225 million tonnes
- By: InnovExplo and Soutex, Revised Sept 8, 2022*
- Preliminary Economic Assessment (Cerrado Gold Inc.)**
- | | |
|-------------------------------|--------------|
| NPV (8%) Post Tax | 1,607 M\$ US |
| Post Tax Payback | 1.8 Years |
| Post Tax IRR | 43% |
| Average Annual Free Cash Flow | \$235 M US |

100% Owned- 7396 hectares

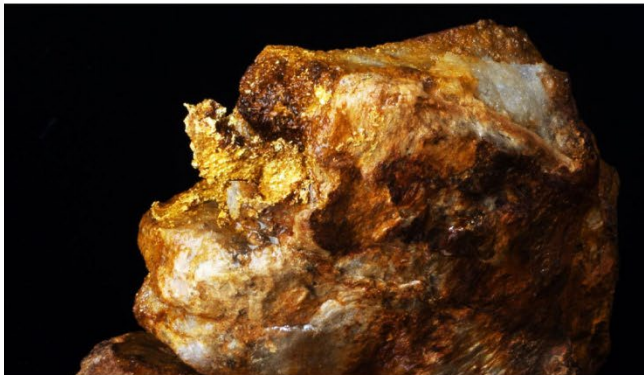
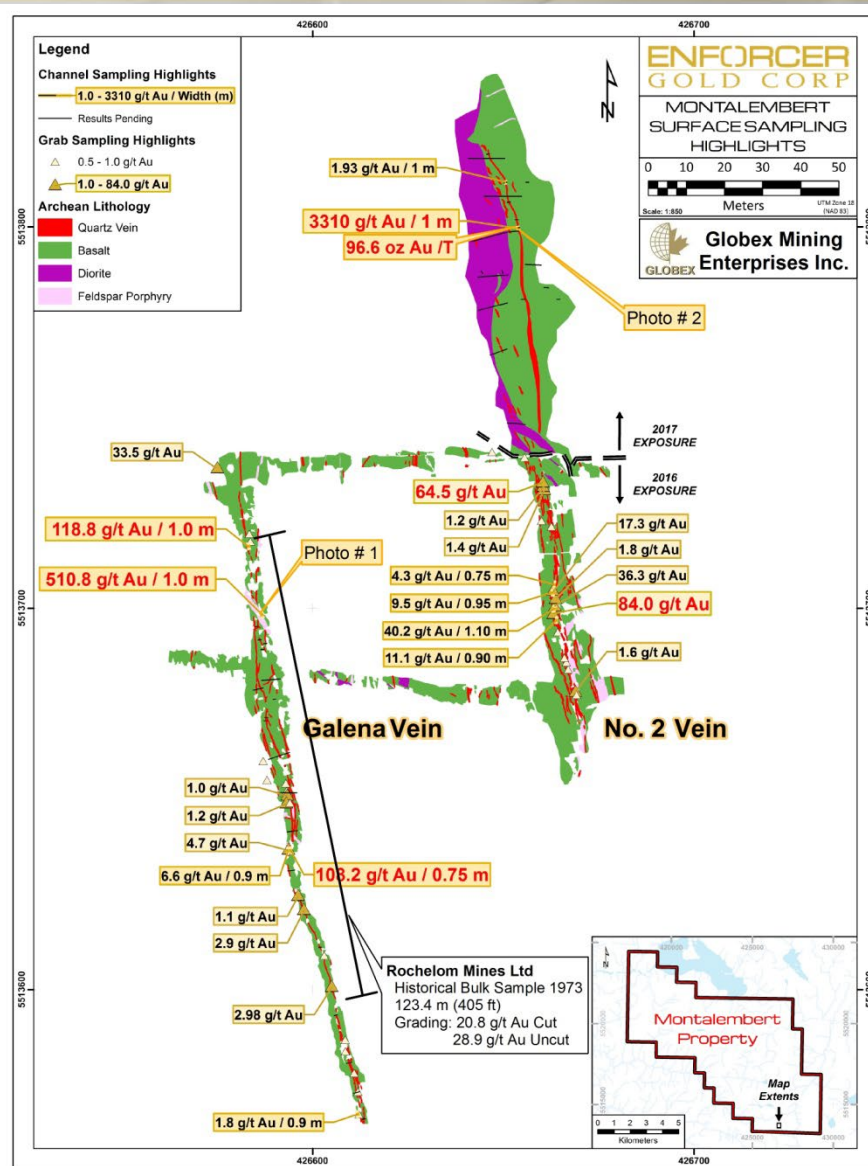
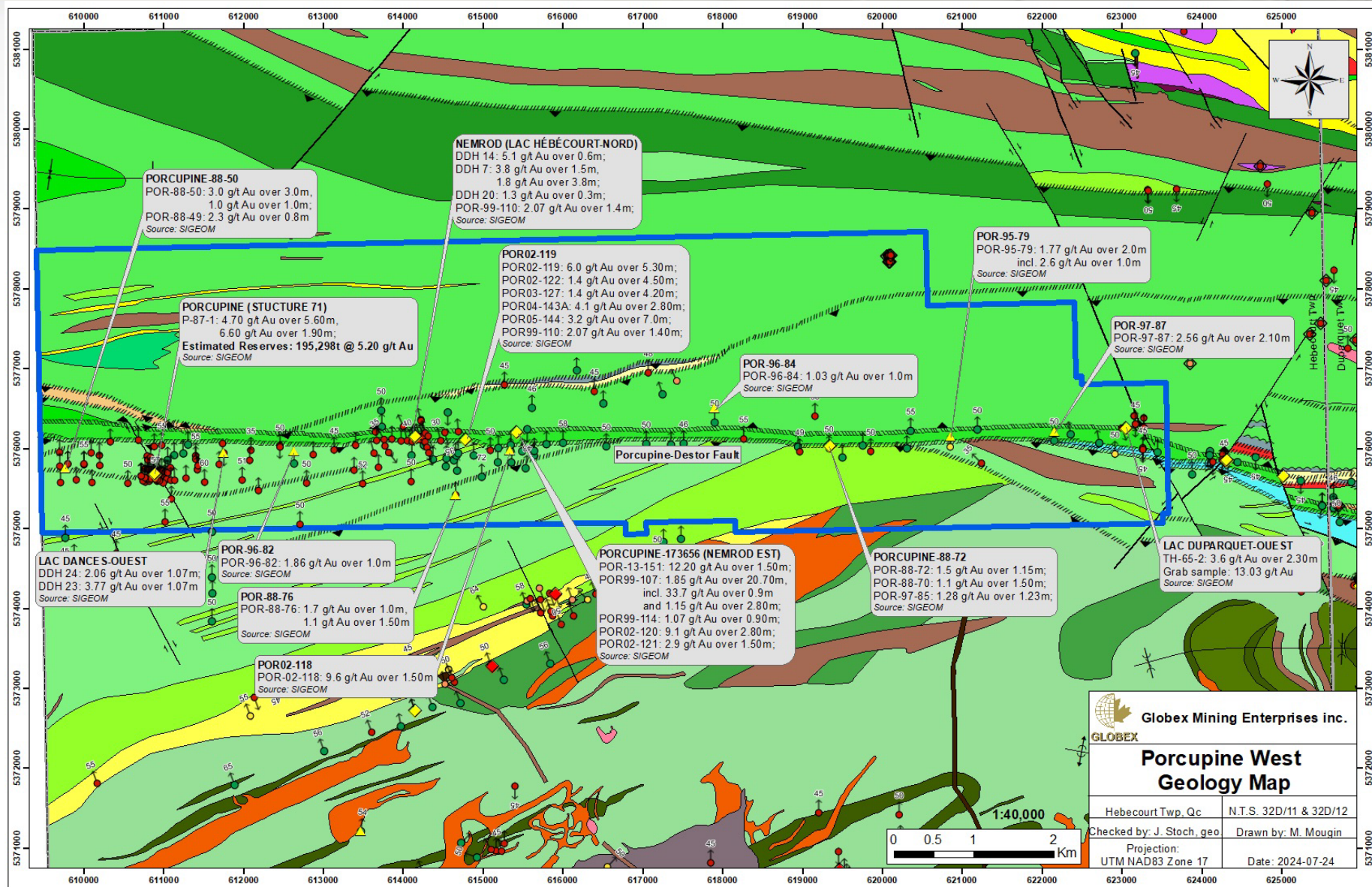


Photo # 2



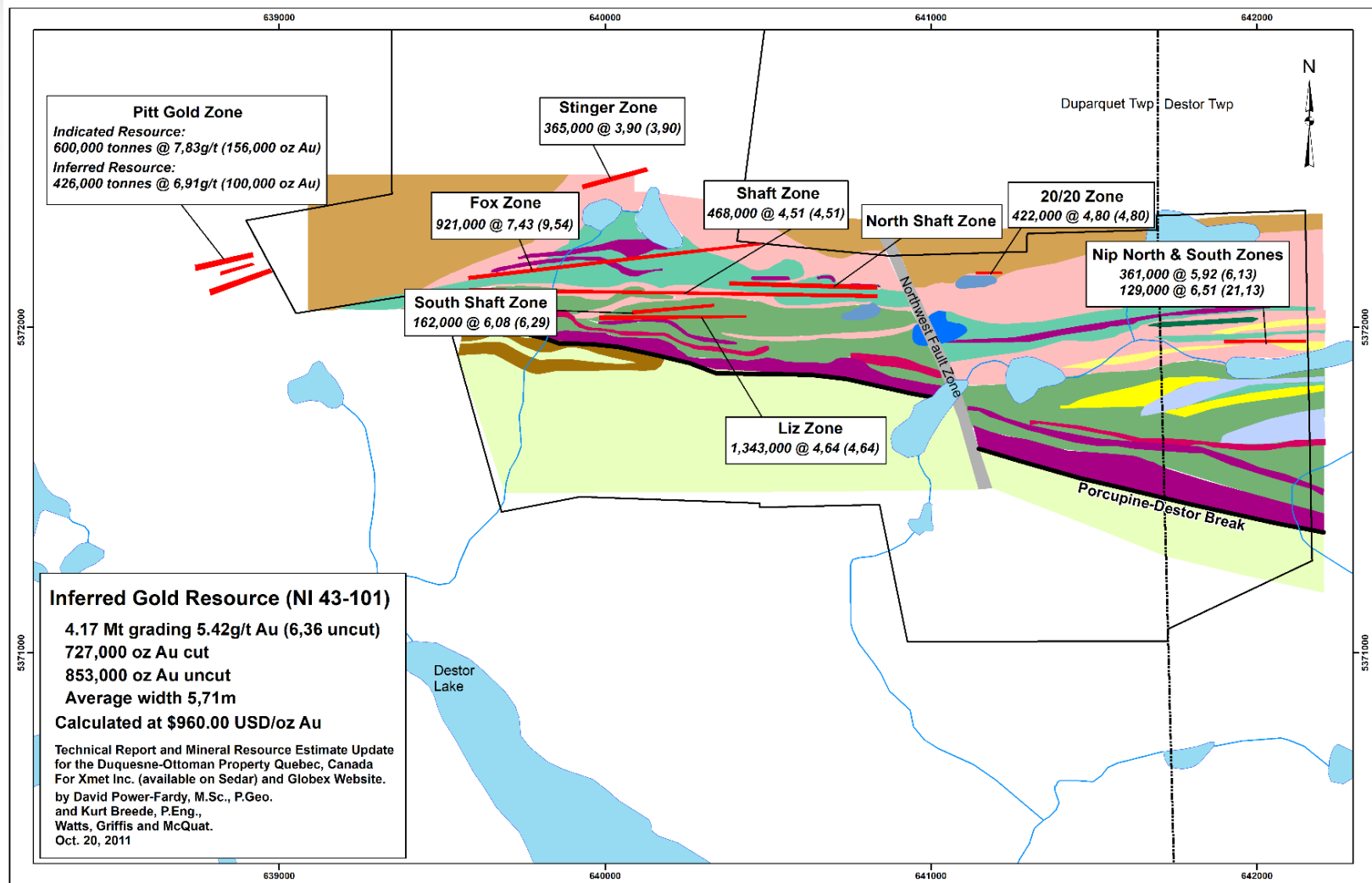
Porcupine West Property, Quebec

100% Globex – 14 kms of Destor Porcupine Structural Zone



Duquesne West, Quebec (50% Globex/50% DAL)

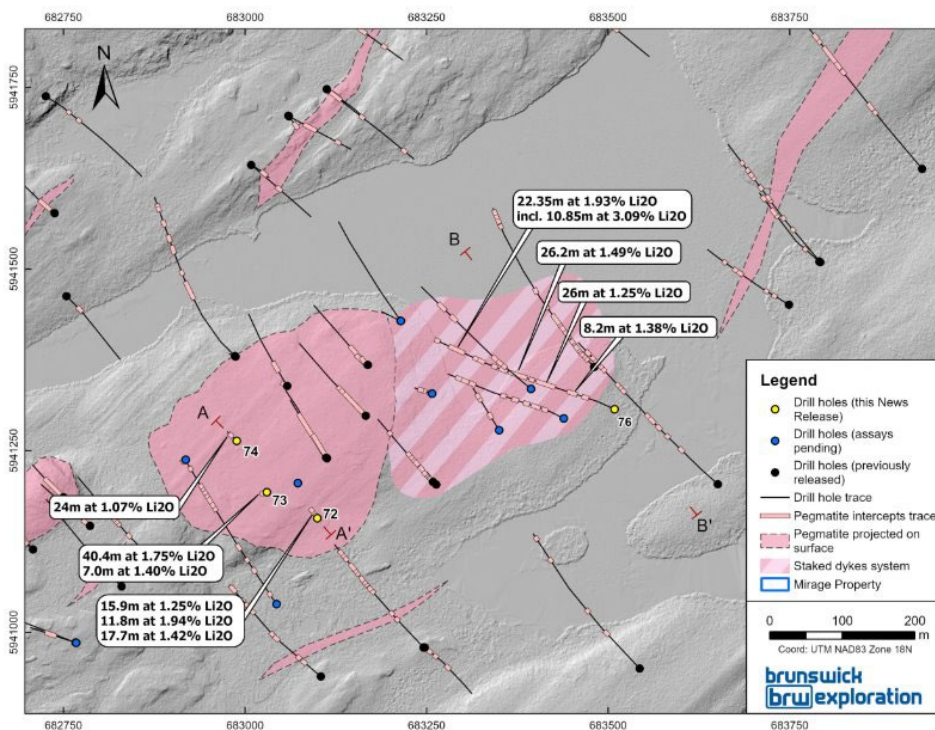
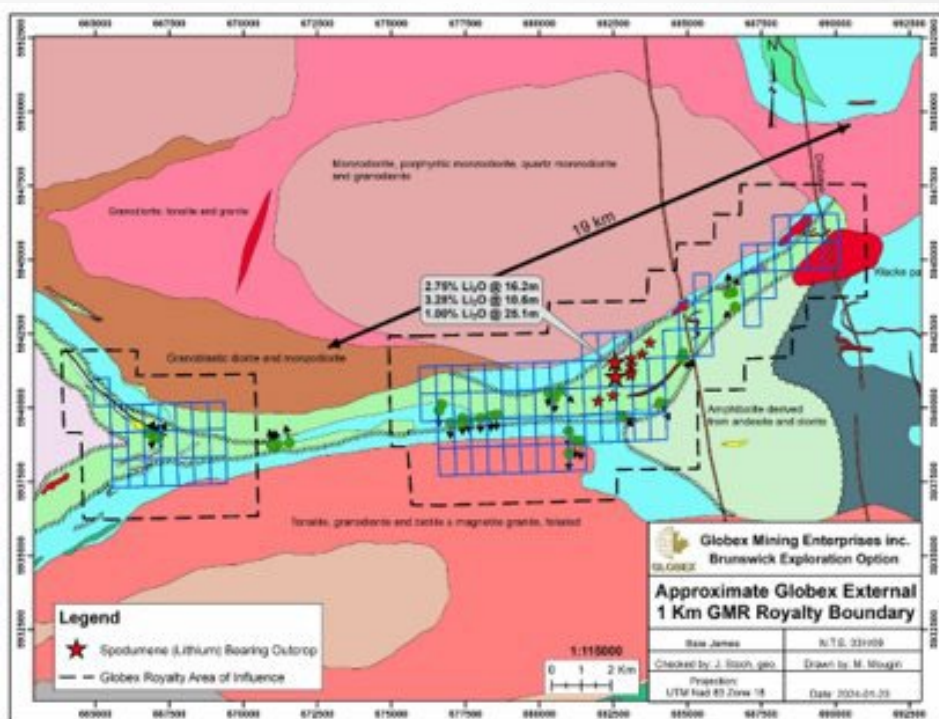
Option – Emperor Metals – Cash \$10M, 15M Shares, \$12M Work over 5 years, 3% GMR



- Multiple gold zones adjoining and related to the Porcupine Destor Break
- Many gold zones open to depth
- New resource estimate in progress.

Lac Escale Lithium Royalty, Quebec

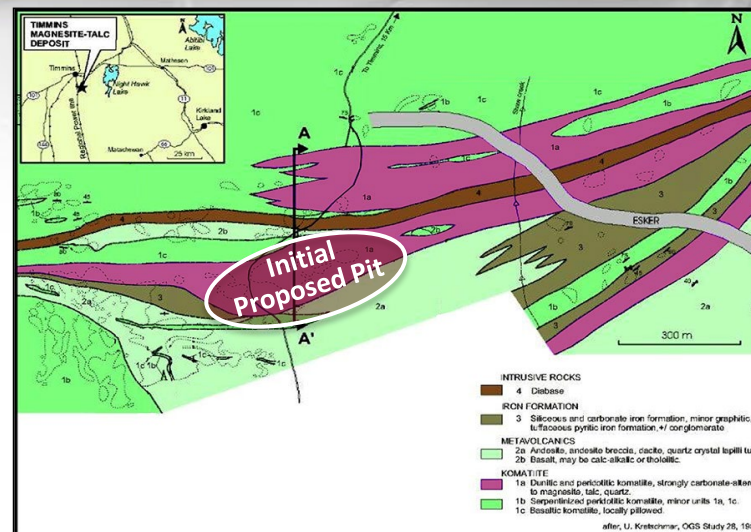
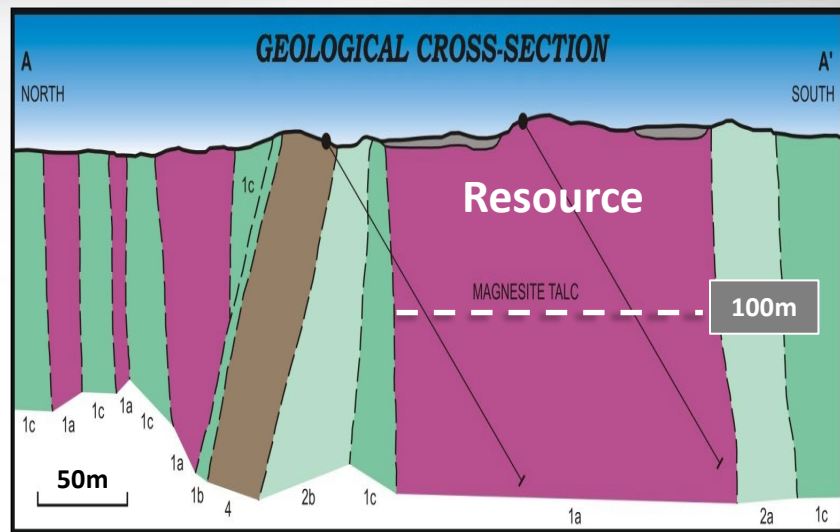
2.5 % GMR: Brunswick Exploration's Mirage Project in James Bay Region



- Brunswick Exploration Winter Drilling drilling program at Mirage of 5,000 metres in 2025.
- First Metallurgical test results by Brunswick Exploration on Mirage came back in line with other high-quality lithium pegmatite projects in the James Bay area (as per Brunswick Exploration press release).

Timmins Talc-Magnesite Project, Ontario

World Class – 100% Globex



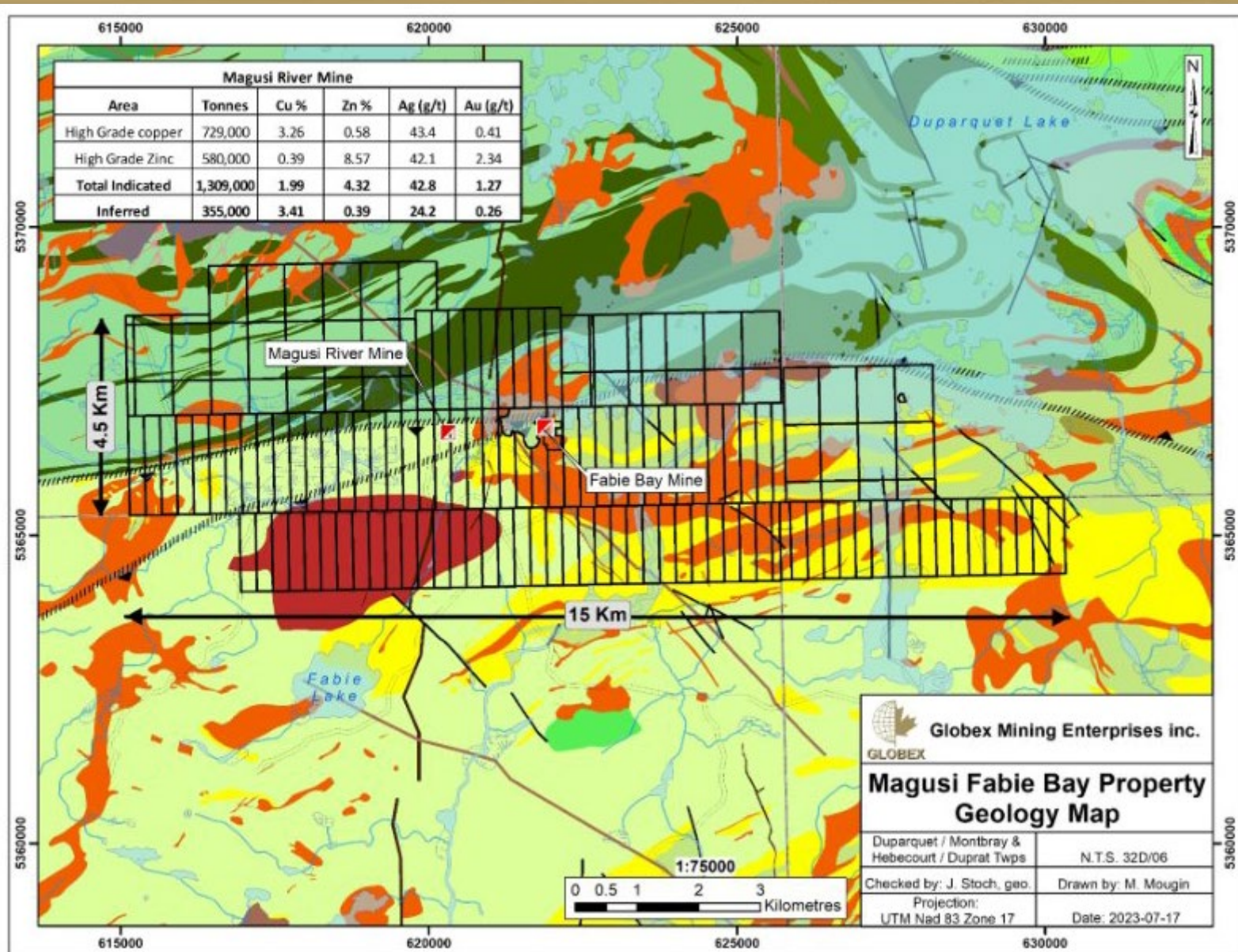
| Resource Category | Tonnage (t) | Magnesite (%) | Talc (%) |
|-------------------|-------------|---------------|----------|
| Indicated | 12,728,000 | 52.1 | 35.4 |
| Inferred | 18,778,000 | 53.1 | 31.7 |

NI 43-101 resources

- Open-pittable deposit
- Simple separation metallurgy
- No environmental negatives (Arsenic, asbestos, etc.)
- High quality (brightness) talc targeting highest value market niches – Plastics, cosmetics, etc.
- Near Timmins, Ontario (Skilled labour, transport, energy, etc)
- Saleable secondary product – MgO
- Targeting Wallboard Market among others
- Long mine life (+100 years)
- Mining Lease in place

New 2025 Option Agreement with Electro Metals

Magusi-Fabie Bay Property, Quebec



Unique Investment Opportunity



Principal Exploration Office

Focus On The Value

- **FEW SHARES** outstanding and history of minimal stock dilution
- **EXPERIENCED**, fiscally prudent management
- **INCOME** from Royalties and Options
- **WE OWN** our property interests and exploration assets (offices, core facility, vehicles, core library, etc.)
- **NO DEBT**, funds available for exploration
- **LOW** Political Risk
 - Based in North America – QC, ON, NS, NB, AZ, Nev., Wash. and Saxony Germany
- **SPECIALIZED**, Experienced Board of Directors
 - 3 senior geologists
 - 1 mining accountant
 - 1 senior finance professional



GLOBEX

Mining Enterprises Inc.



Thank You

Danke

Merci

Meegwetch

www.globexmining.com