



Globex Mining Enterprises Inc.

“At Home in North America”

56,347,436 shares issued and outstanding

December 16, 2025

Globex Reports Ongoing Drill Results on Nordeau Royalty Claims Discovery

Toronto, Ontario, Canada. GLOBEX MINING ENTERPRISES INC. (GMX – Toronto Stock Exchange, G1MN – Frankfurt, Stuttgart, Berlin, Munich, Tradegate, Lang & Schwarz, LS Exchange, TTMzero, Düsseldorf and Quotrix Düsseldorf Stock Exchanges and GLBXF – OTCQX International in the US) is pleased to update shareholders as regards exploration by Cartier Resources Inc. (ECR-TSXV, 6CA-FSE) on Globex’s Nordeau Royalty claims in Vauquelin Township (32C03) 45 km southeast of Val d’Or, Quebec. Globex holds a 3% Gross Metal Royalty on the Nordeau claims including the area where Cartier has made an important gold discovery called the North Contact Zone (NCZ) on Cartier’s Cadillac Property. Cartier has announced drill intersections on the NCZ gold zone intersecting significant gold mineralization between 100 m to 300 m depth. Drilling has outlined three parallel high-grade gold zones NCZ1, NCZ2 and NCZ3 over strike length of approximately 400 metres. The deepest drill holes are CA25-531 which intersected 3.2 g/t Au over 12.5 m including 7.0 g/t Au over 3.0 m and hole CA25-536 which intersected 111.5 g/t Au over 2.0 m including 339.6 g/t Au over 0.5 m.

Assay results from drill holes on the NCZ have been reported in 4 press releases by Cartier Resources. The pertinent drill results are listed below as reported by Cartier in chronological order of publication.

Table 1: Drill Hole Best Assay Results From the Contact Sector in [September 23, 2025](#) Cartier Press Release

Hole Number	From (m)	To (m)	Core Length** (m)	Au (g/t) Uncut	Vertical Depth (m)	Zone
CA25-523	207.0	213.0	6.0	0.9*	≈155	North Contact (3)
CA25-524	227.8	235.5	7.7	5.9*	≈195	North Contact (3)
Including	228.4	230.5	2.1	16.7*		
CA25-525	201.4	203.4	2.0	4.3	≈180	North Contact (1)
And	233.8	246.0	12.2	1.3	≈215	North Contact (2)
And	277.0	285.0	8.0	1.2	≈255	North Contact (3)
And	295.0	303.0	8.0	1.0	≈270	North Contact (3)

* Occurrences of visible gold (VG) have been noted in the drill core at various intervals. ** Based on the observed intercept angles within the drill core, true thicknesses are estimated to represent approximately 55–80% of the reported core length intervals.

Table 2: Drill Hole Best Assay Results From Contact Sector in [October 21, 2025](#) Cartier Press Release

Hole Number	From (m)	To (m)	Core Length** (m)	Au (g/t) Uncut	Vertical Depth (m)	Zone
CA25-526	239.0	239.5	0.5	11.7	≈230	North Contact (1)
And	277.1	282.1	5.0	1.1	≈270	North Contact (2)
CA25-527	252.0	262.0	10.0	1.0	≈250	North Contact (2)
And	322.0	340.0	18.0	2.2	≈325	North Contact (3)
Including	339.0	340.0	1.0	27.0		
CA25-528	194.0	205.0	11.0	1.0*	≈160	North Contact (3)
CA25-529	151.0	152.0	1.0	6.2	≈135	North Contact (1)
And	237.0	241.0	4.0	4.3	≈215	North Contact (3)
Including	240.0	241.0	1.0	6.1		
CA25-530	209.0	209.5	0.5	10.4*	≈200	North Contact (1)
And	280.0	289.0	9.0	11.0*	≈270	North Contact (3)
Including	282.0	284.5	2.5	30.2*		

* Occurrences of visible gold (VG) have been noted in the drill core at various intervals. ** Based on the observed intercept angles within the drill core, true thicknesses are estimated to represent approximately 50–85% of the reported core length intervals.

Table 3: Drill Hole Best Assay Results From Contact Sector [November 4, 2025](#) Cartier Press Release

Hole Number	From (m)	To (m)	Core Length** (m)	Au (g/t) Uncut	Vertical Depth (m)	Zone
CA25-531	328.5	341.0	12.5	3.2	≈315	NCZ3
Including	328.5	331.5	3.0	7.0		
Including	338.0	341.0	3.0	5.8		
CA25-532	223.0	225.0	2.0	11.4	≈205	NCZ1
Including	224.0	225.0	1.0	22.0		
And	287.5	295.0	7.5	1.8*	≈265	NCZ3
CA25-533	227.3	232.0	4.7	3.9	≈220	NCZ3
Including	227.3	228.0	0.7	11.0		
CA25-534	195.0	198.0	3.0	2.5	≈190	NCZ1
CA25-535	227.0	229.0	2.0	9.6	≈225	NCZ1
Including	227.0	228.0	1.0	17.1		
And	307.0	315.0	8.0	2.0		
Including	314.0	315.0	1.0	7.7	≈305	NCZ3
CA25-536	226.0	228.0	2.0	111.5*	≈225	NCZ1
Including	226.9	227.4	0.5	339.6*		
And	308.0	315.0	7.0	1.9		
Including	308.0	309.0	1.0	10.8	≈305	NCZ3

* Occurrences of visible gold (VG) have been noted in the drill core at various intervals. ** Based on the observed intercept angles within the drill core, true thicknesses are estimated to represent approximately 55-70% of the reported core length intervals.

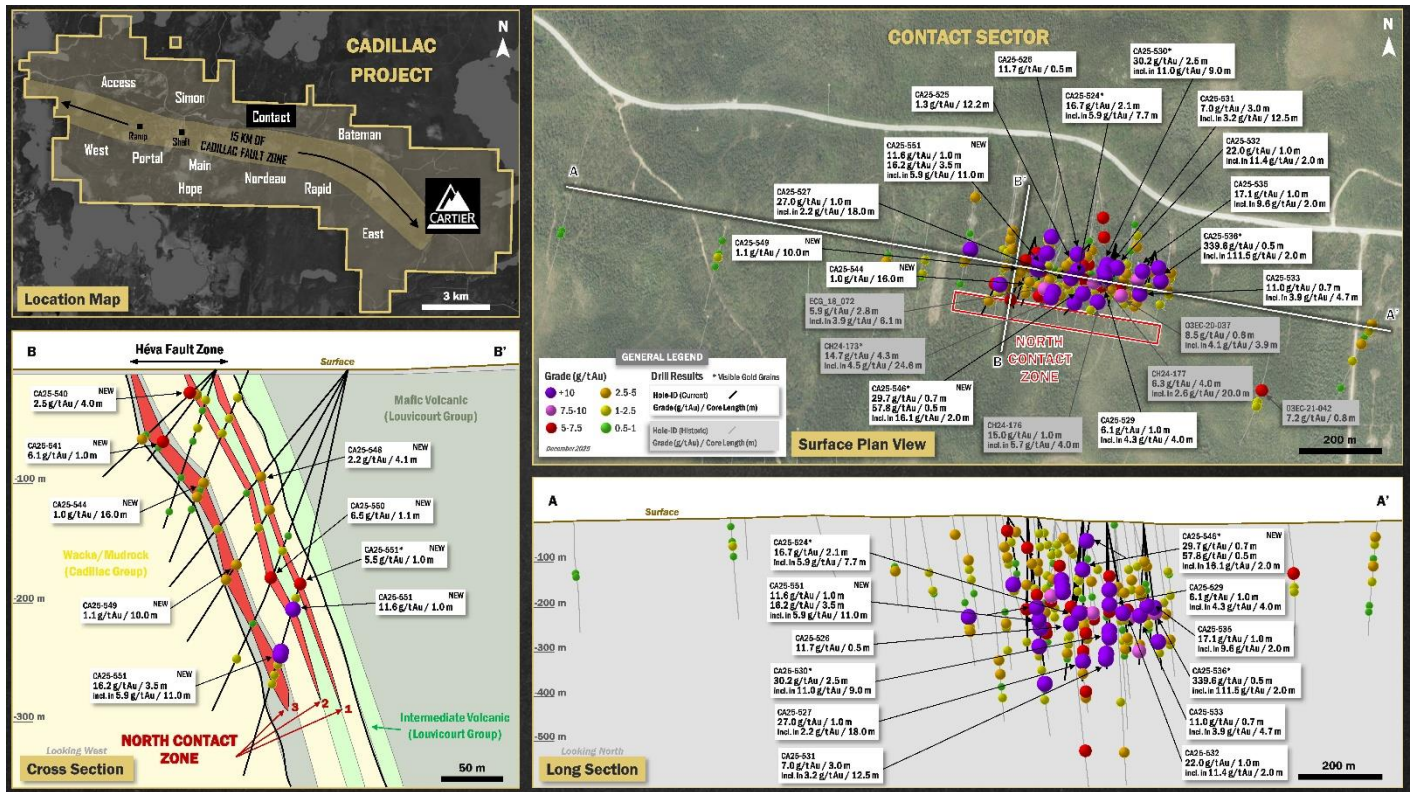
Table 4: Drill Hole Best Assay Results From Contact Sector in [December 2, 2025](#) Cartier Press Release

Hole Number	From (m)	To (m)	Core Length** (m)	Au (g/t) Uncut	Vertical Depth (m)	Zone
CA25-535	327.0	328.0	1.0	17.0	≈315	NCZ3
CA25-540	28.0	32.0	4.0	2.5	≈25	NCZ2
Including	29.0	30.0	1.0	5.2		
CA25-541	91.0	93.0	2.0	3.6	≈65	NCZ3
Including	92.0	93.0	1.0	6.1		
CA25-544	101.0	117.0	16.0	1.0	≈105	NCZ3
CA25-546	38.0	38.7	0.7	29.7	≈40	NCZ1
And	106.5	108.5	2.0	16.1*	≈105	NCZ3
Including	107.3	107.8	0.5	57.8*		
CA25-548	116.9	121.0	4.1	2.2	≈95	NCZ1
CA25-549	136.0	138.0	2.0	2.7	≈120	NCZ1
And	201.0	211.0	10.0	1.1	≈180	NCZ3
CA25-550	187.9	189.0	1.1	6.5	≈180	NCZ2
CA25-551	188.0	189.0	1.0	5.5*	≈180	NCZ1
And	210.0	211.0	1.0	11.6	≈205	NCZ2
And	250.0	261.0	11.0	5.9	≈250	NCZ3
Including	250.0	253.5	3.5	16.2		

* Occurrences of visible gold (VG) have been noted in the drill core at various intervals. ** Based on the observed intercept angles within the drill core, true thicknesses are estimated to represent approximately 60-85% of the reported core length intervals.

Cartier reports that drilling to date suggest that “the gold system remains robust and open in all directions, suggesting significant expansion potential. Upcoming drilling is required on NCZ to extend gold mineralization closer to surface 10-15 m) to support a future gold inventory. Further exploration drilling is already planned to test several new high priority regional targets at Contact Sector. Cartier is now evaluating an expansion of its drilling program toward the eastern extension of the NCZ.”

Refer to the plan maps and cross and long sections below for an overview of drill results to date on the NCZ gold zone.



Globex is pleased by the good results reported by Cartier on Globex’s royalty claims. In 2026 Cartier will be drilling on other portions of Globex’s royalty claims as part of their greater than 100,000 metre planned drill program.

This press release was written by Jack Stoch, P. Geo., Executive Chairman and CEO of Globex in his capacity as a Qualified Person (Q.P.) under NI 43-101.

We Seek Safe Harbour.

Foreign Private Issuer 12g3 – 2(b)
 CUSIP Number 379900 50 9
 LEI 529900XYUKGG3LF9PY95

For further information, contact:

Jack Stoch, P. Geo., Acc. Dir.
 Executive Chairman & CEO
 Globex Mining Enterprises Inc.
 120 Carlton Street, Unit 219
 Toronto, Ontario, Canada M5A 4K2

Tel.: 819.797.5242
 Fax: 819.797.1470
 info@globexmining.com
 www.globexmining.com

Forward-Looking Statements: Except for historical information, this news release may contain certain “forward-looking statements”. These statements may involve a number of known and unknown risks and uncertainties and other factors that may cause the actual results, level of activity and performance to be materially different from the expectations and projections of Globex Mining Enterprises Inc. (“Globex”). No assurance can be given that any events anticipated by the forward-looking information will transpire or occur, or if any of them do so, what benefits Globex will derive therefrom. A more detailed discussion of the risks is available in the “Annual Information Form” filed by Globex on SEDARplus.ca.